

NEXGRILL[®] CUCINA

CUCINA BASIN

Assembly and Operating Instruction

Product code: CCNSINKQ

Barbeques Galore customer care 1300 139 867,
Store locator 1 800 978 555.



FOR OUTDOOR USE ONLY. NOT FOR COMMERCIAL USE.

IMPORTANT: READ AND FOLLOW ALL WARNINGS AND INSTRUCTIONS BEFORE ASSEMBLING AND USING THE APPLIANCE.

IMPORTANT, RETAIN FOR FUTURE REFERENCE: READ CAREFULLY.

TABLE OF CONTENTS

Important Safety Instructions.....	2
Package Parts List	3
Tools Needed	5
Hardware Package List	5
Assembly Steps	6
Opening and Closing Doors.....	17
Operating Instructions.....	20
Care and Maintenance.....	21
Warranty and Consumer Guarantee	22
Exploded View	23
Parts List.....	24

IMPORTANT SAFETY INSTRUCTIONS

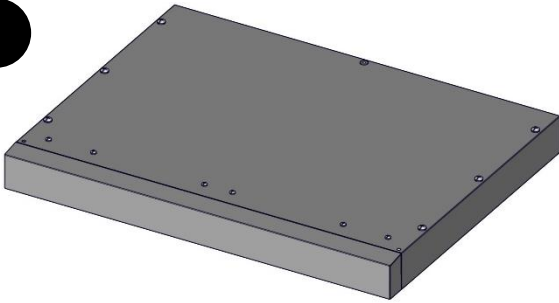
DANGER: Always wear safety goggles and gloves in order to avoid personal injury.

- Inspect this product for chipping, scratching, cracking, scratches or scuff marks. If any damages or defects are noticed, do not install.
- Use this product only in the manner intended by the manufacturer. If you have any questions, contact the manufacturer.
- Installation work and plumbing must be done by qualified person(s) in accordance with all applicable codes and standards.
- Protect the entire surface during installation

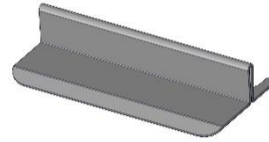
SAVE THESE INSTRUCTIONS

PACKAGE PARTS LIST

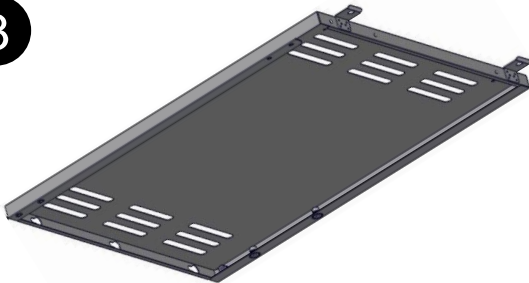
1



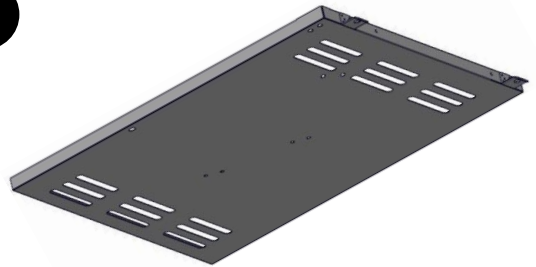
2



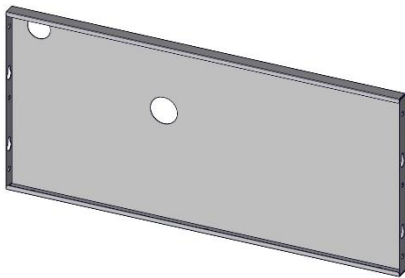
3



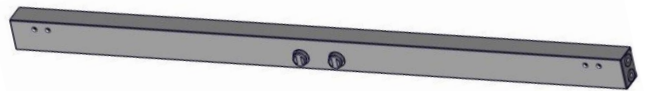
4



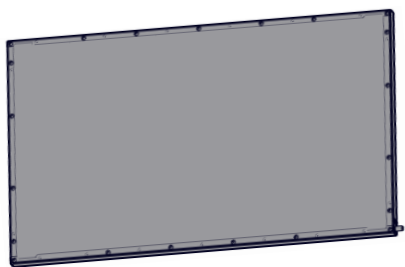
5



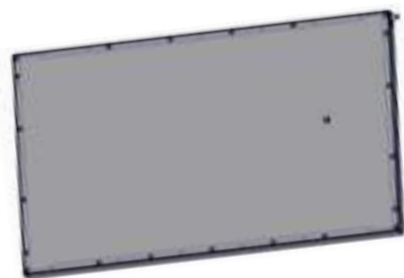
6



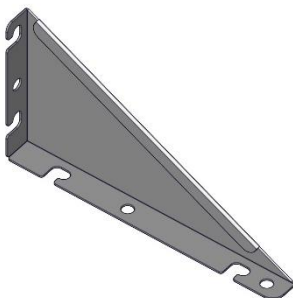
7



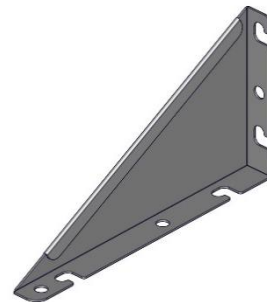
8



9

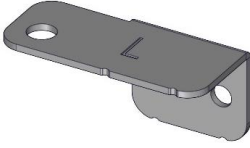


10

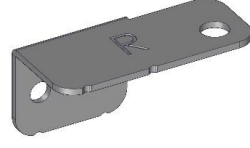


PACKAGE PARTS LIST

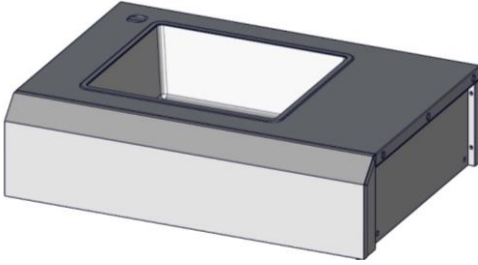
11



12



13



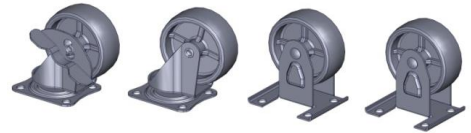
14



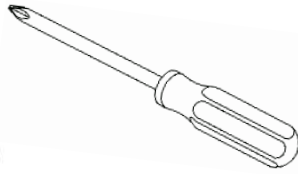
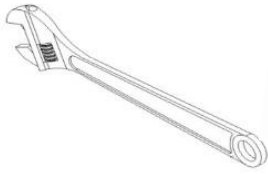
15



16



TOOLS NEEDED



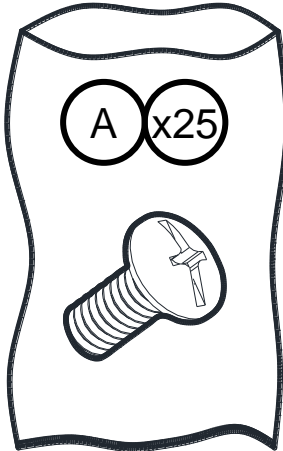
Not included



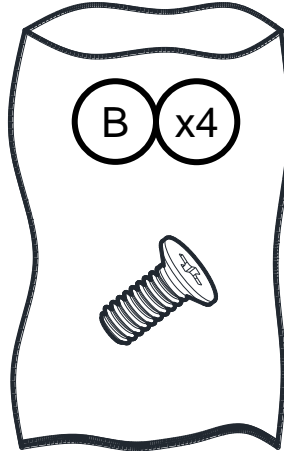
Some parts come with Screws pre-installed. Loosen and tighten for final assembly.

HARDWARE PACKAGE LIST

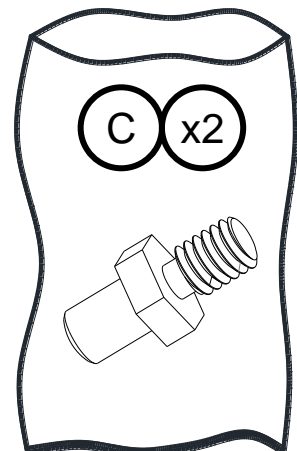
Truss head screw
1/4-20X1/2"



Socket head screw
5/32-32 x 25/64"



Pivot Hinge

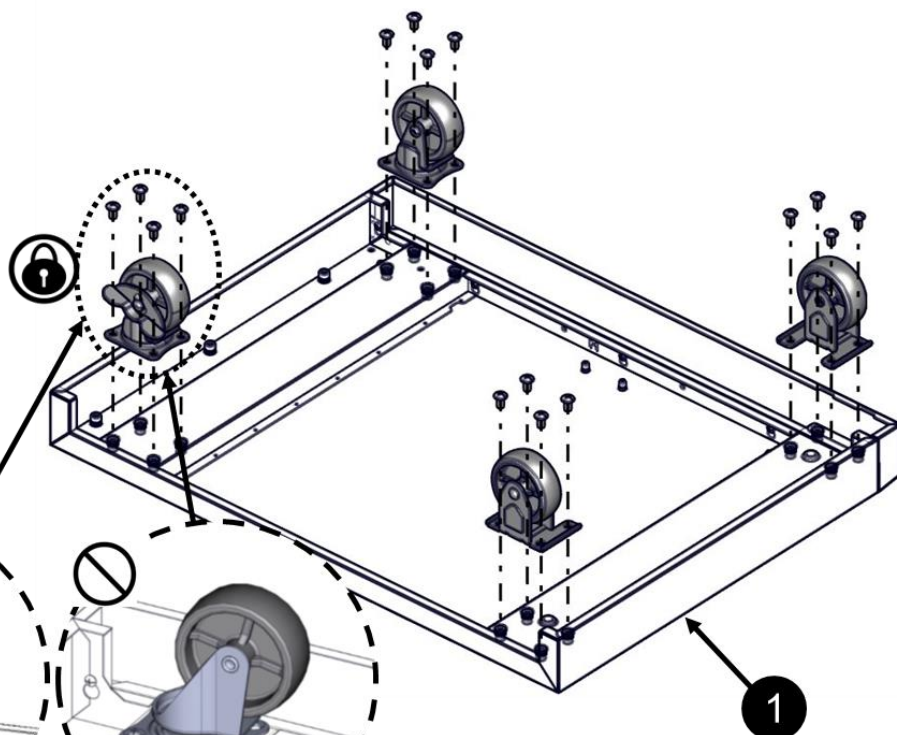
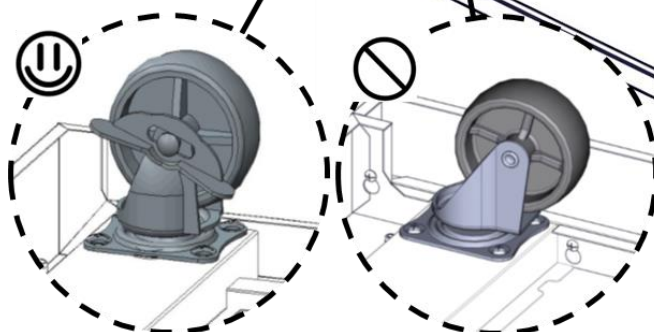
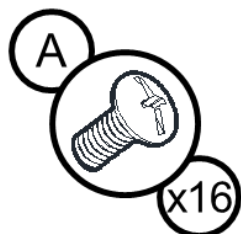


Important notice: Screw A and Screw B has extra screws, which are for modular connection. Please DO NOT discard.

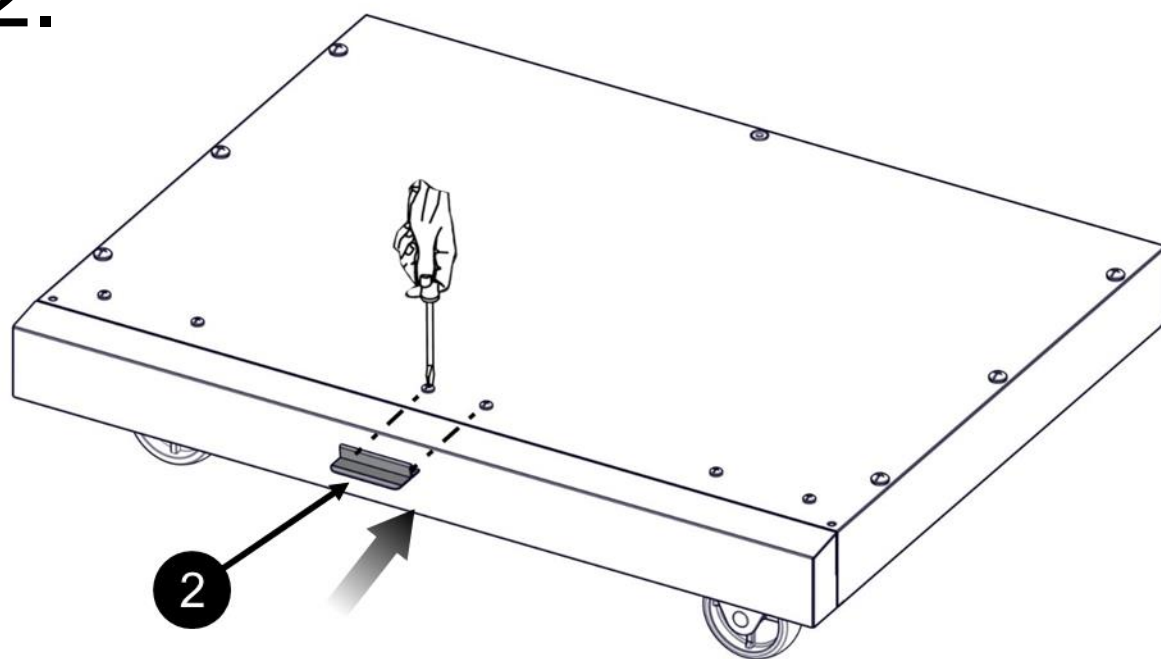
For the modular connection, please see Module Connection Assembly Instruction.

ASSEMBLY INSTRUCTIONS

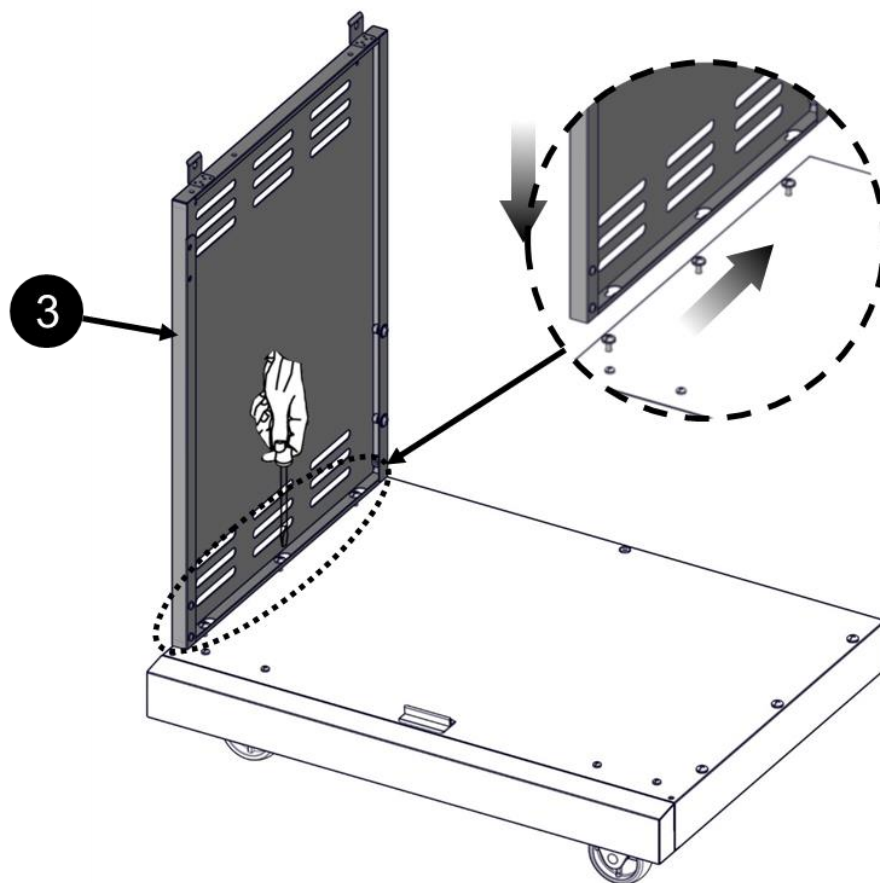
1. ⚠



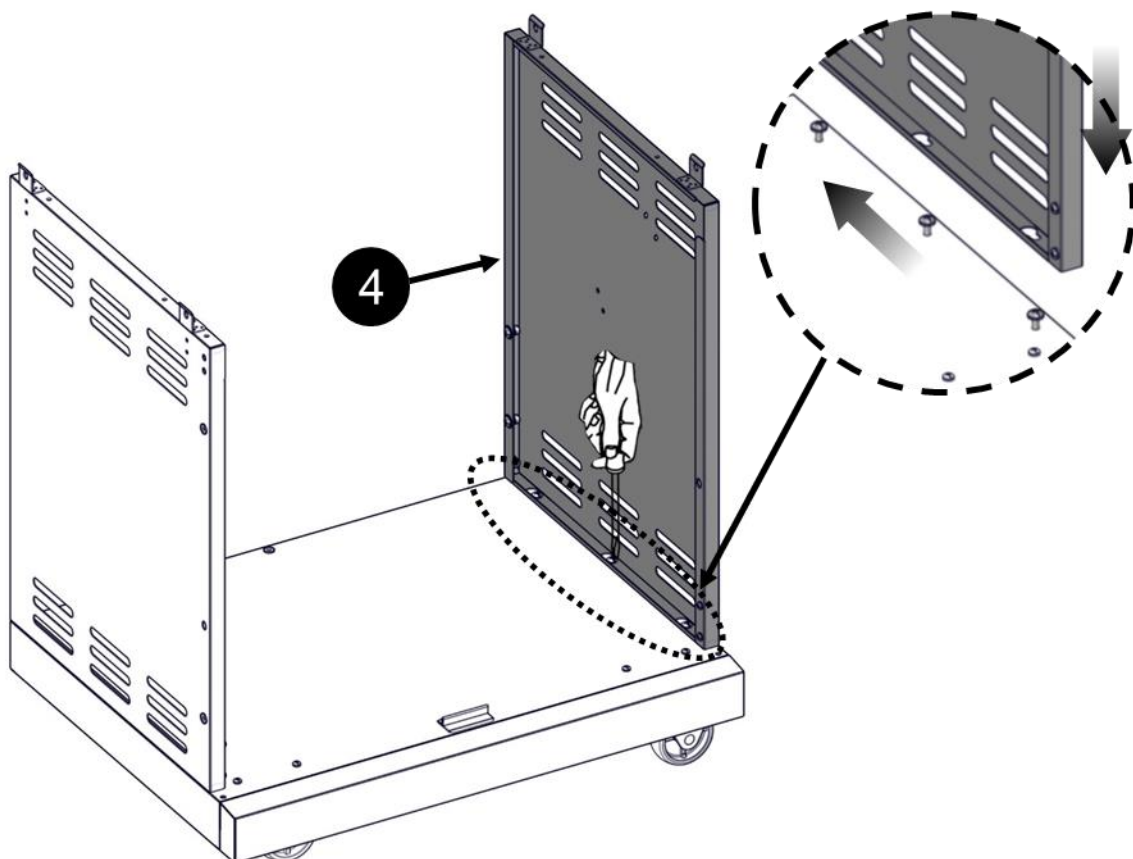
2.



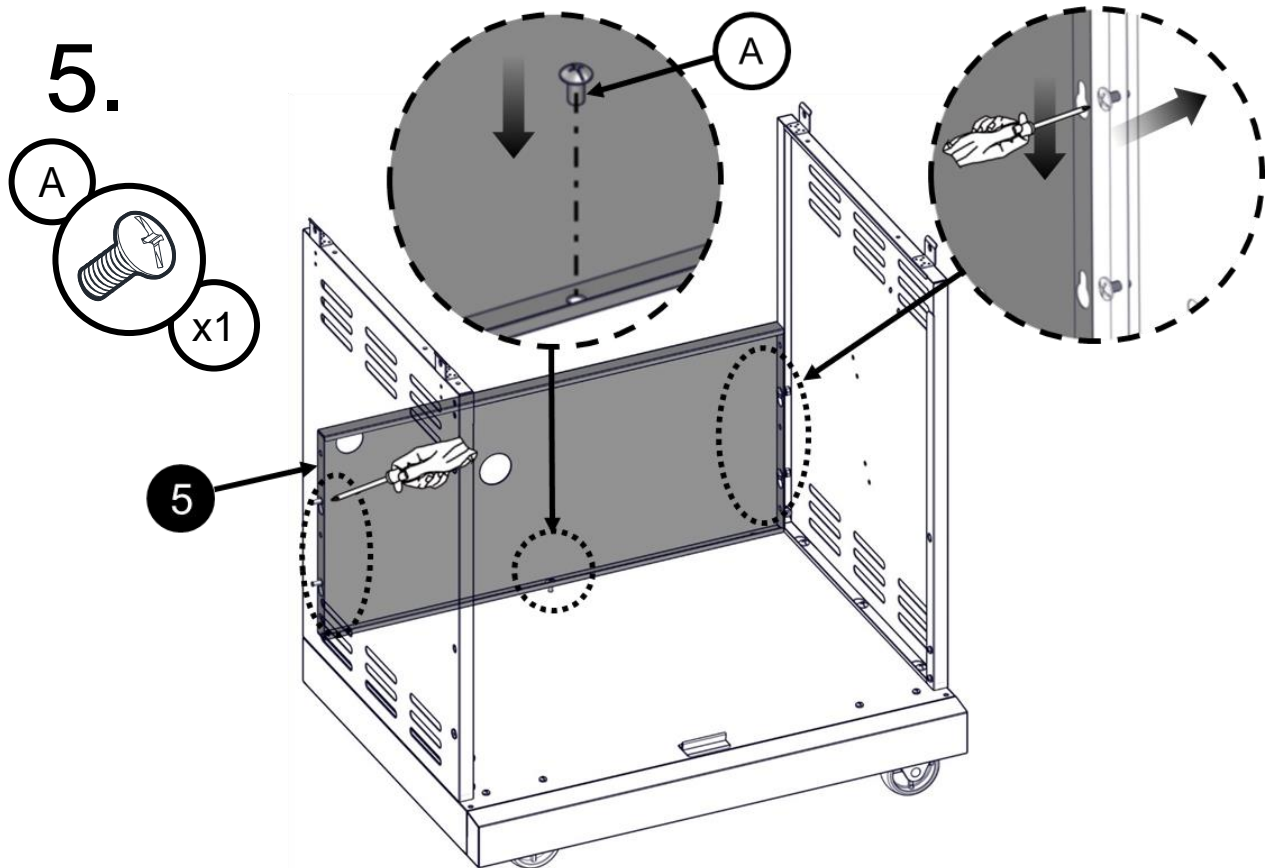
3.



4.



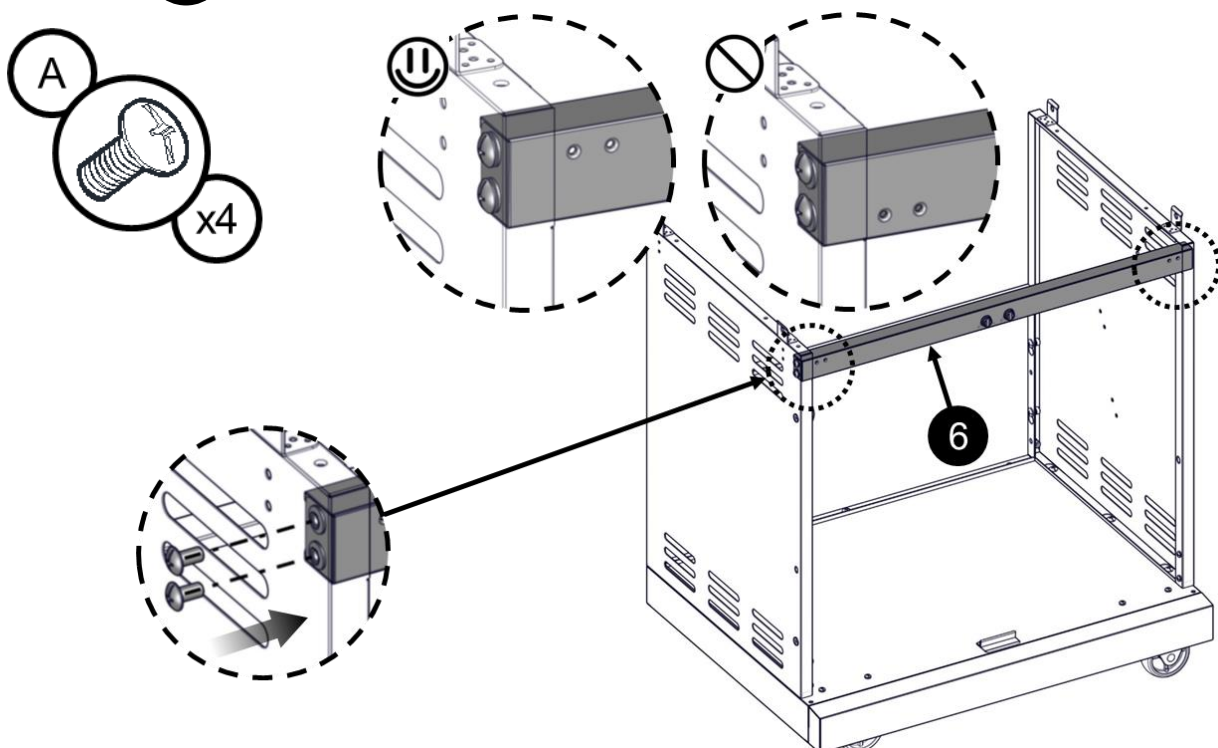
5.



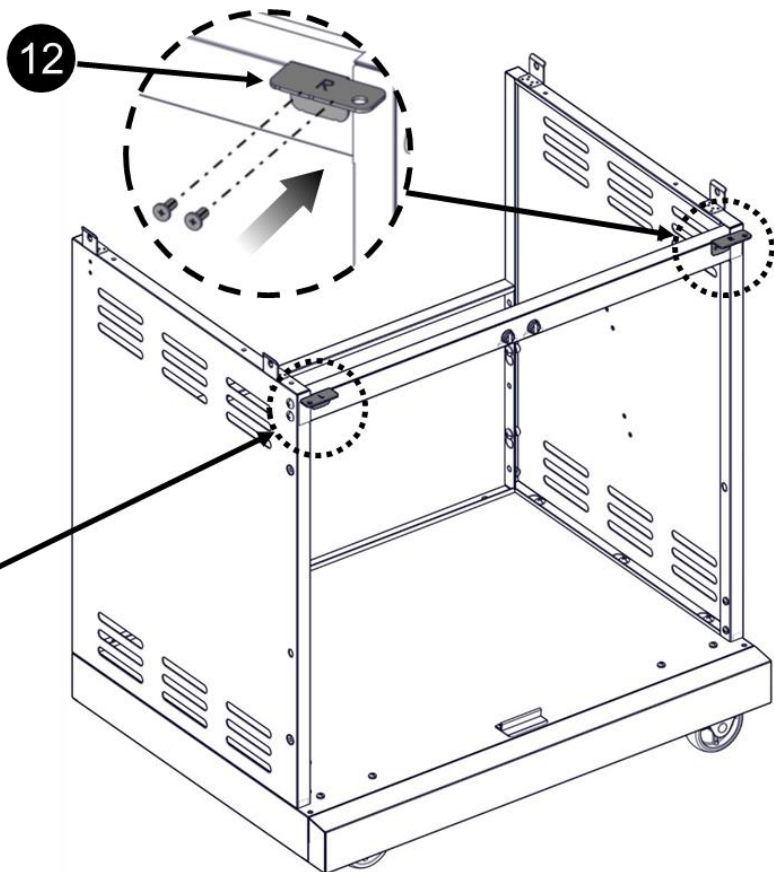
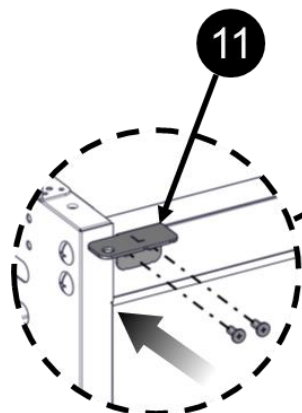
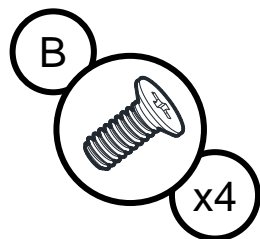
6.



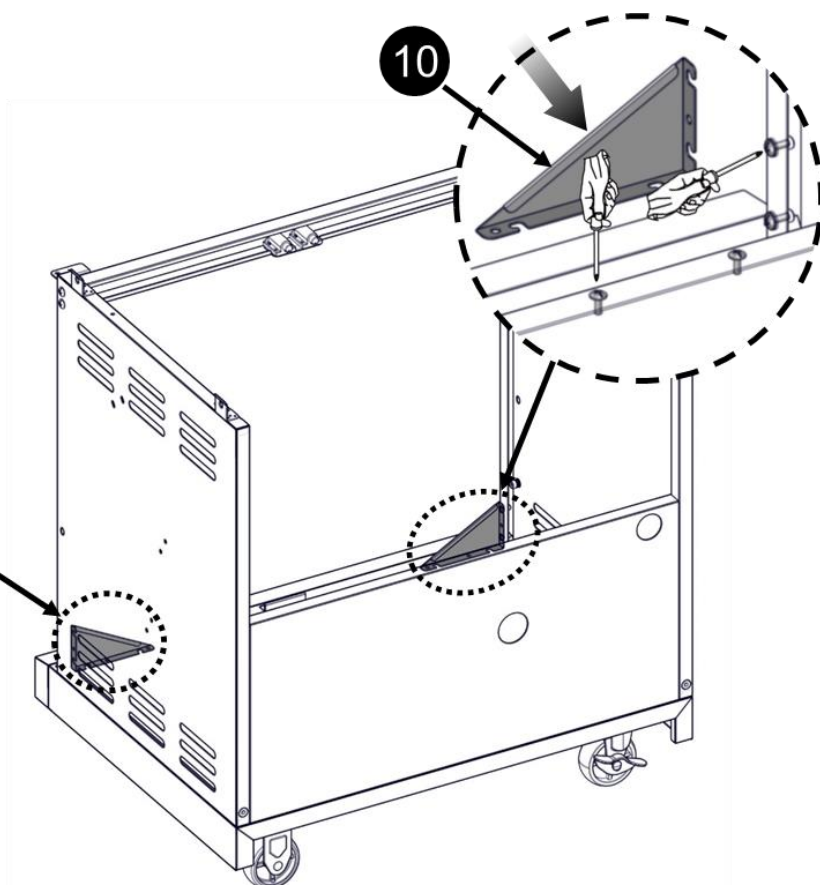
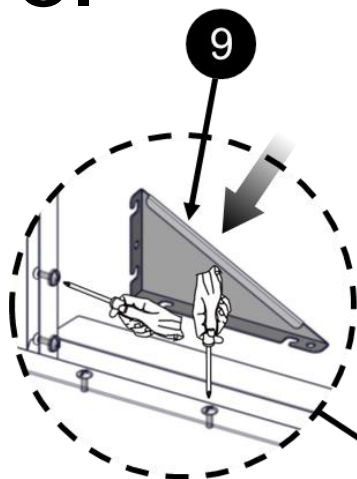
Note: The holes on the side of cart frame should be facing up.



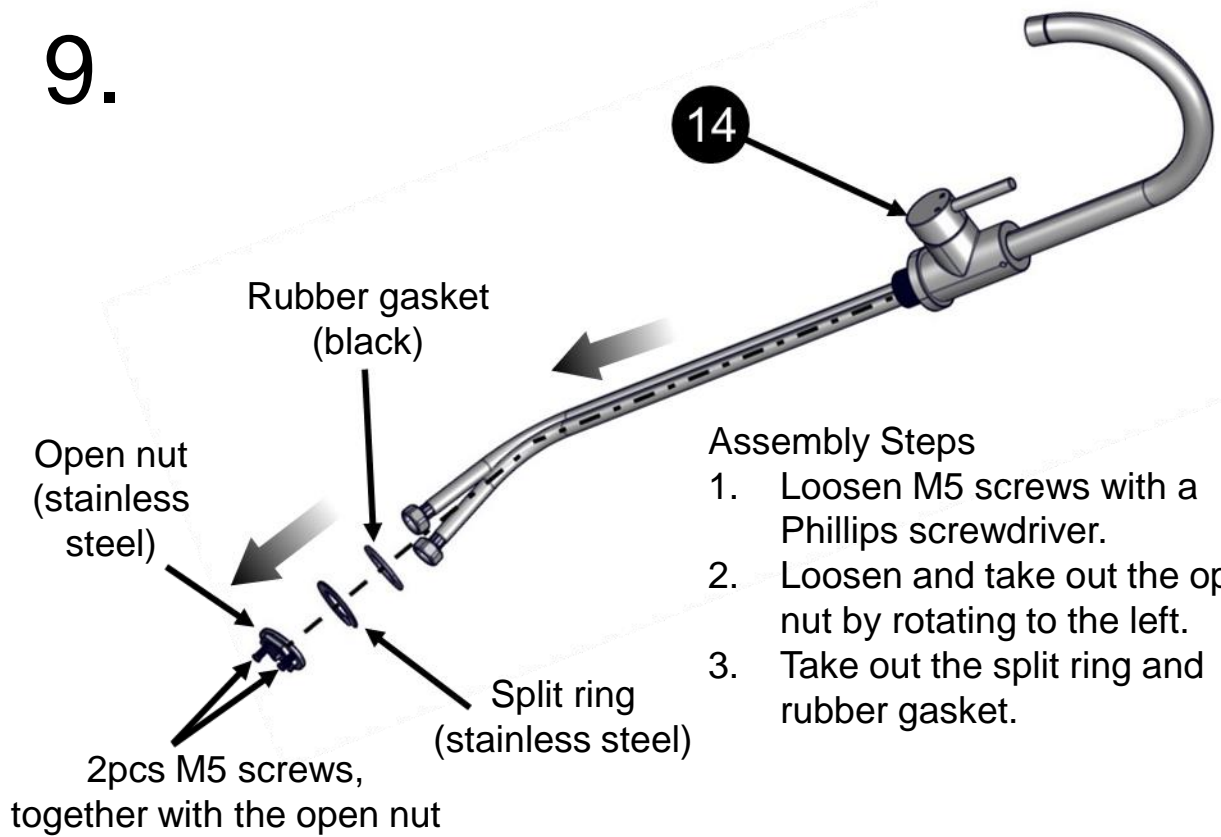
7.



8.



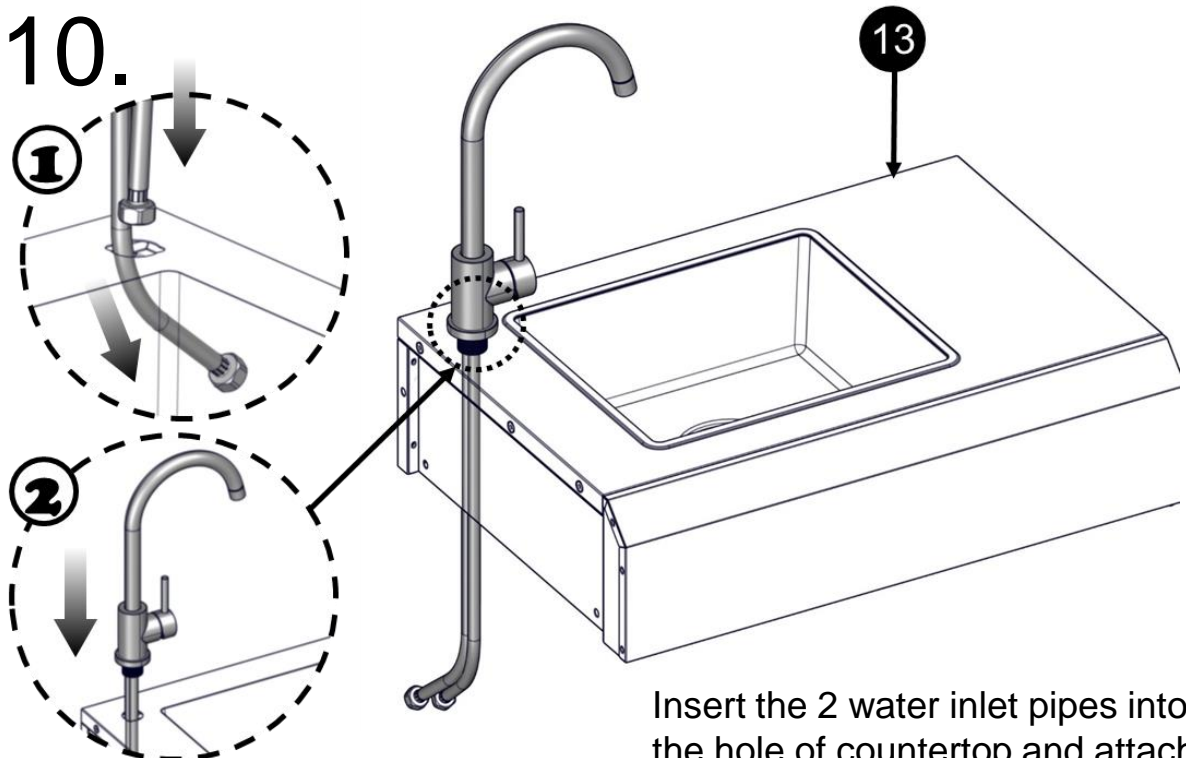
9.



Assembly Steps

1. Loosen M5 screws with a Phillips screwdriver.
2. Loosen and take out the open nut by rotating to the left.
3. Take out the split ring and rubber gasket.

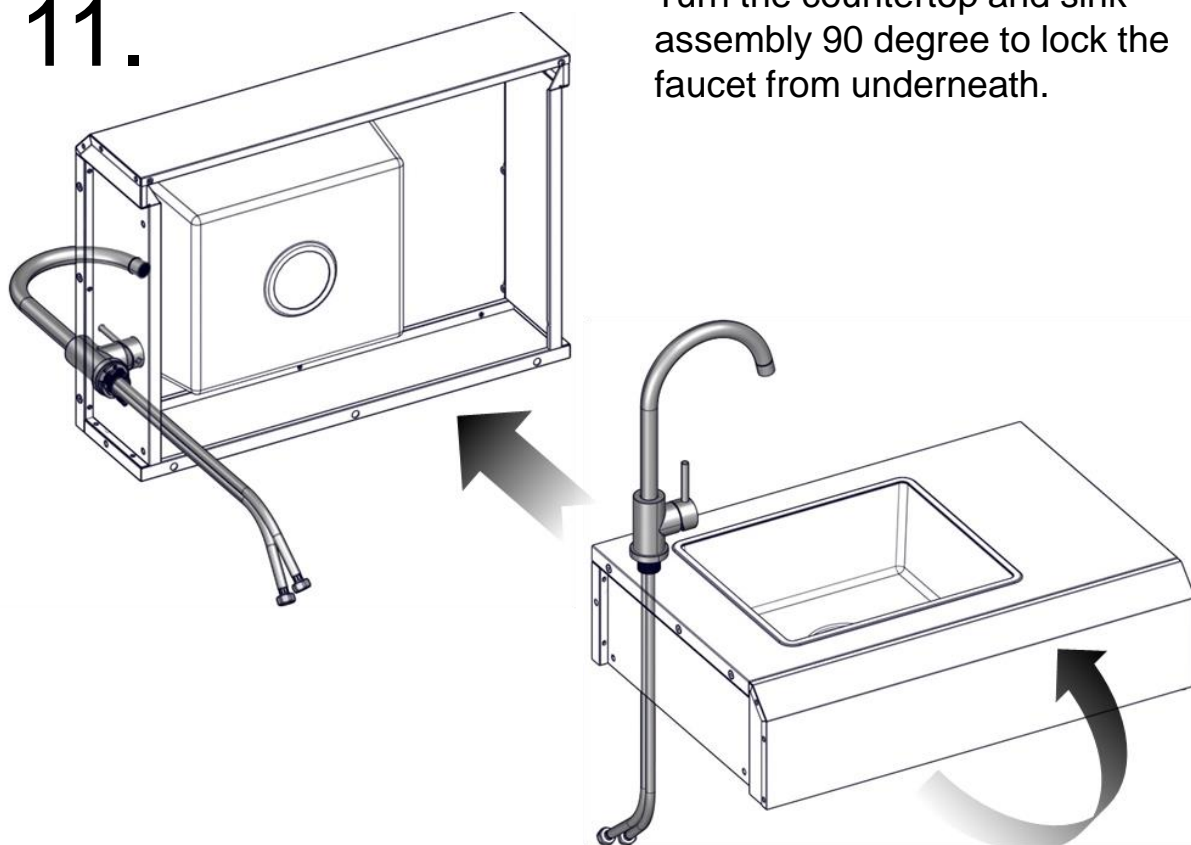
10.



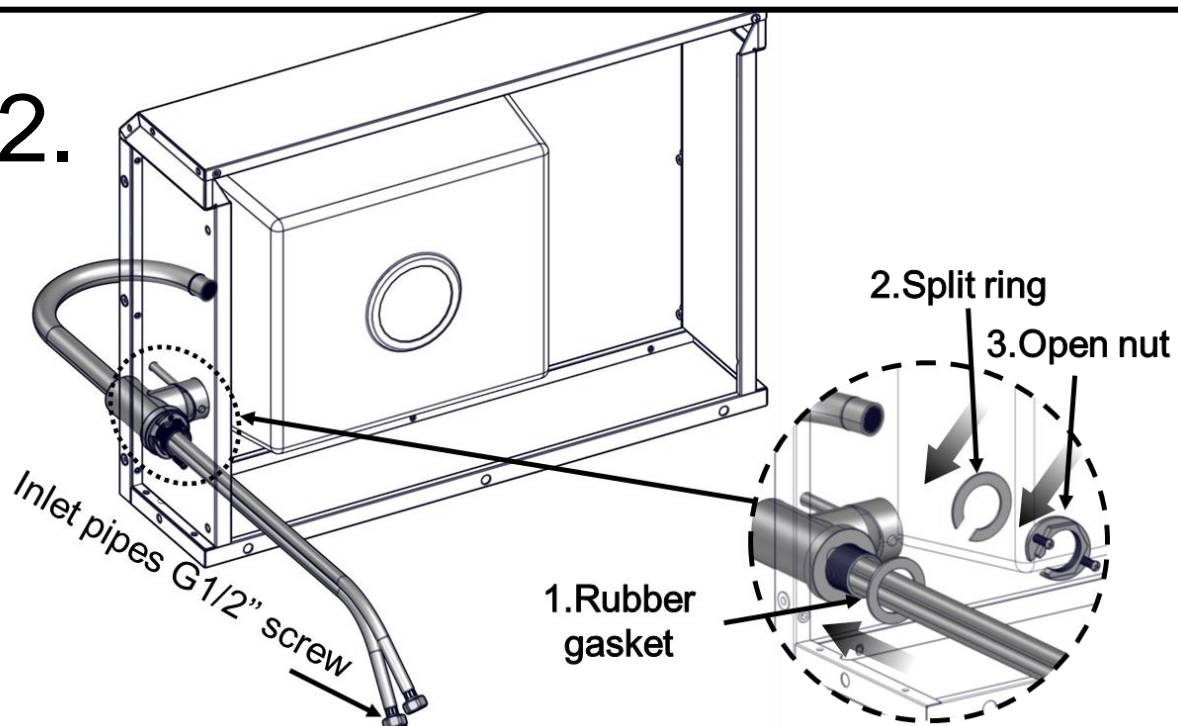
Insert the 2 water inlet pipes into the hole of countertop and attach the faucet close to countertop.

11.

Turn the countertop and sink assembly 90 degree to lock the faucet from underneath.



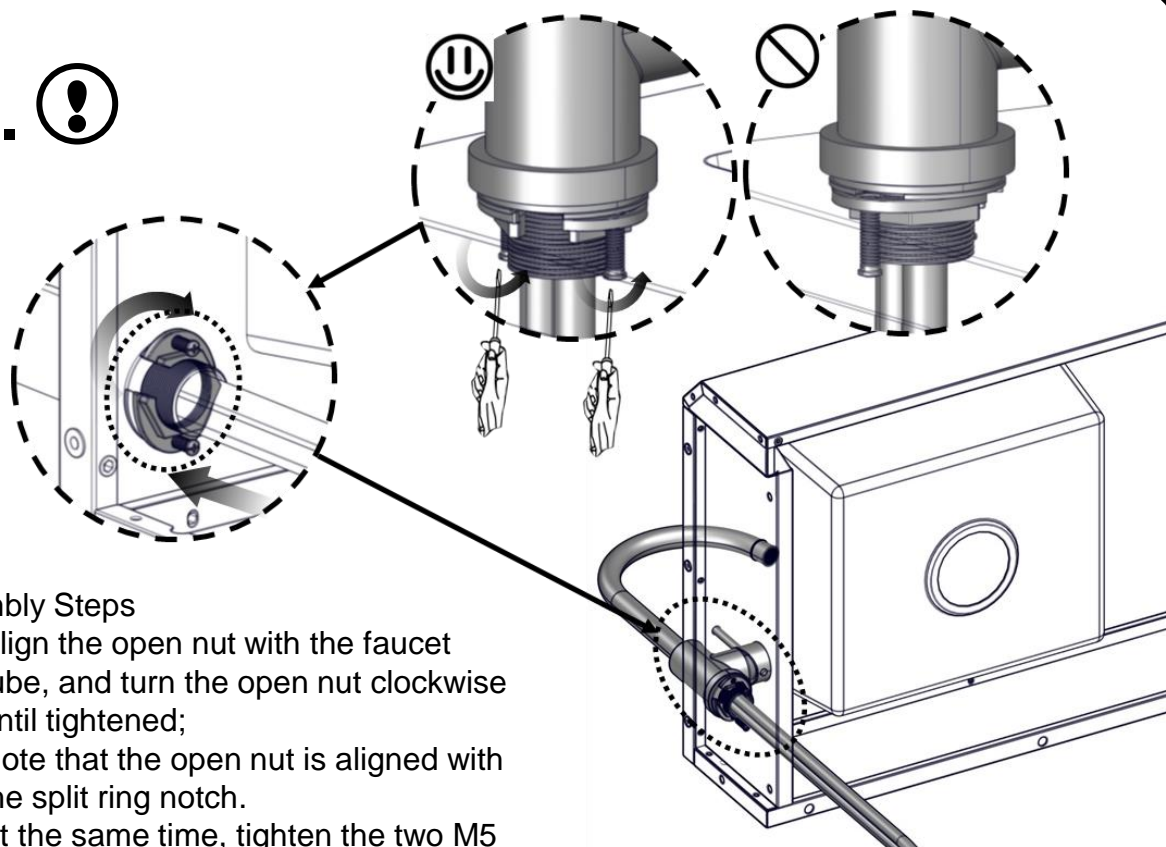
12.



Assembly Steps

1. Insert the rubber gasket through the end of the inlet pipes
2. Insert the split ring to inlet pipe through the notch.
3. Insert the open nut to inlet pipes through the notch.

13. ⚠

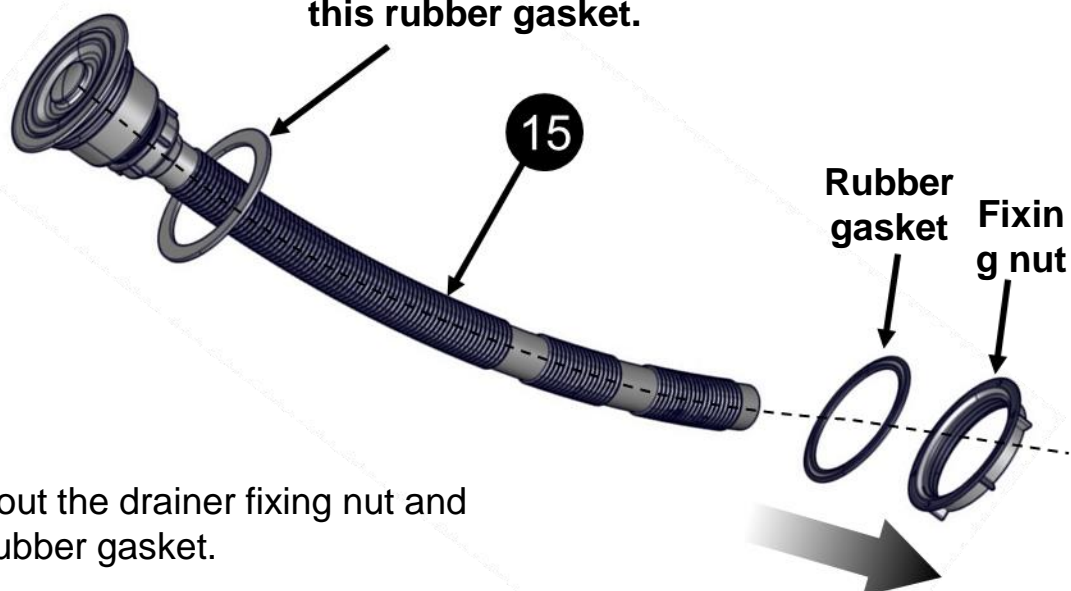


Assembly Steps

1. Align the open nut with the faucet tube, and turn the open nut clockwise until tightened;
2. Note that the open nut is aligned with the split ring notch.
3. At the same time, tighten the two M5 screws on the open nut.

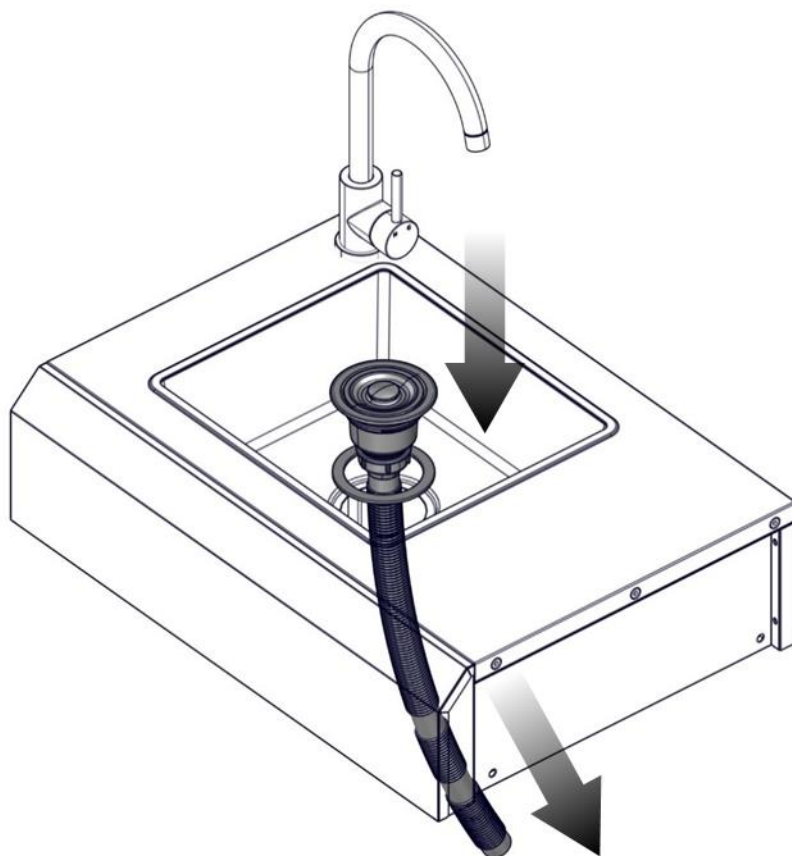
14.

No need to take out this rubber gasket.

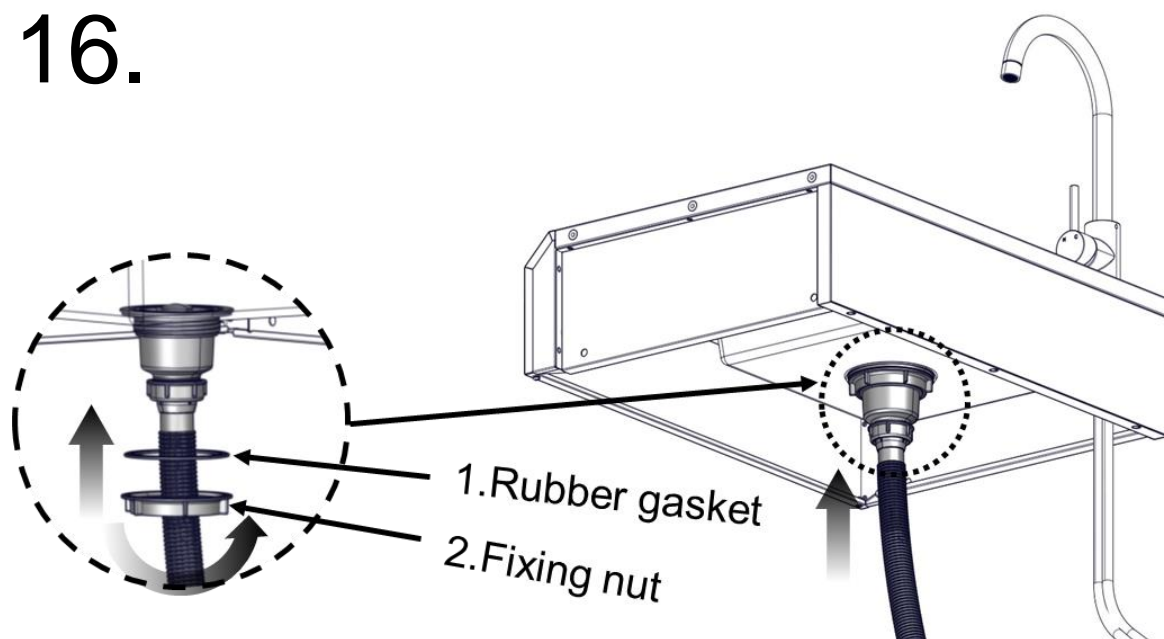


Take out the drainer fixing nut and one rubber gasket.

15.

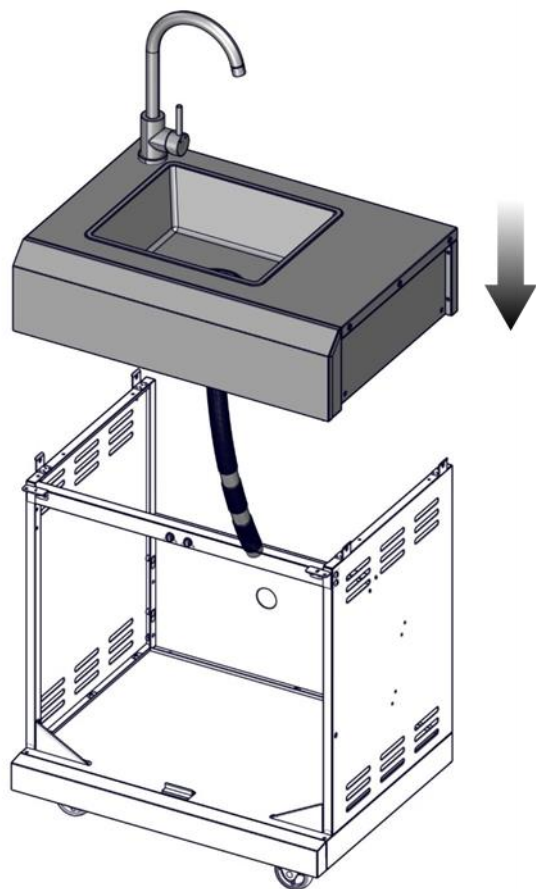


16.

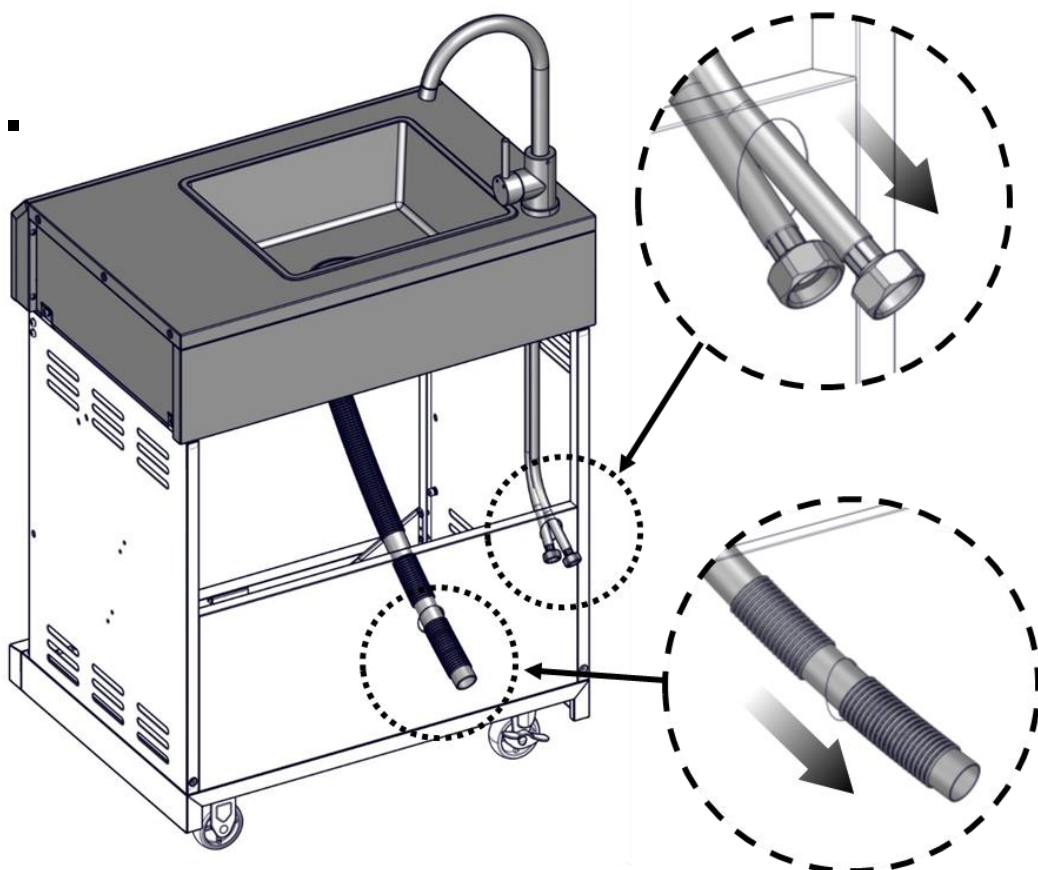


1. Insert the rubber gasket that was taken out in Step 14.
2. Insert the fixing nut that was taken out in Step 14 and tighten firmly to prevent water from leaking.

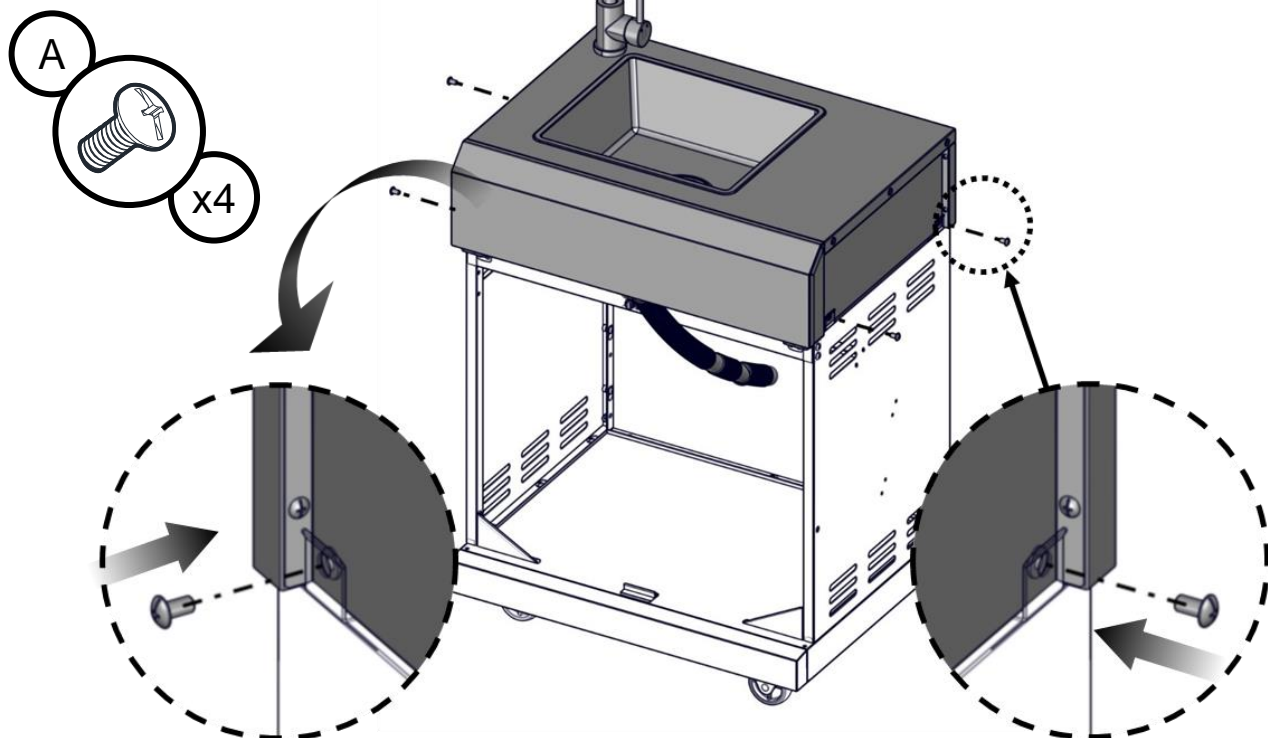
17. 



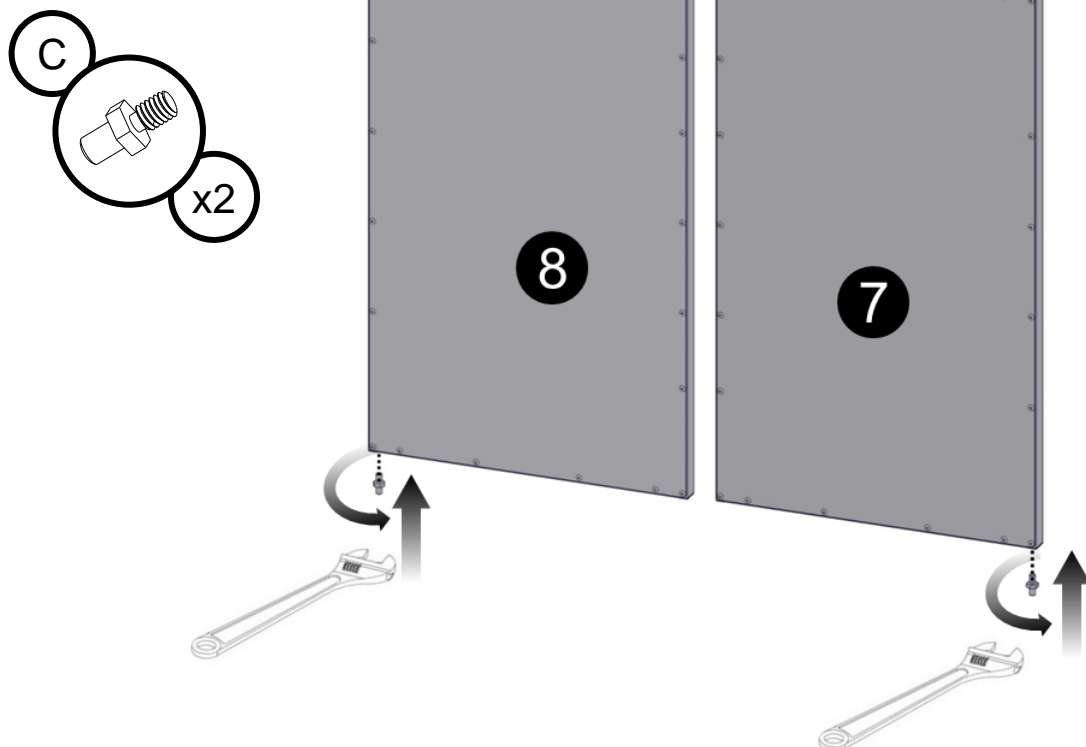
18.



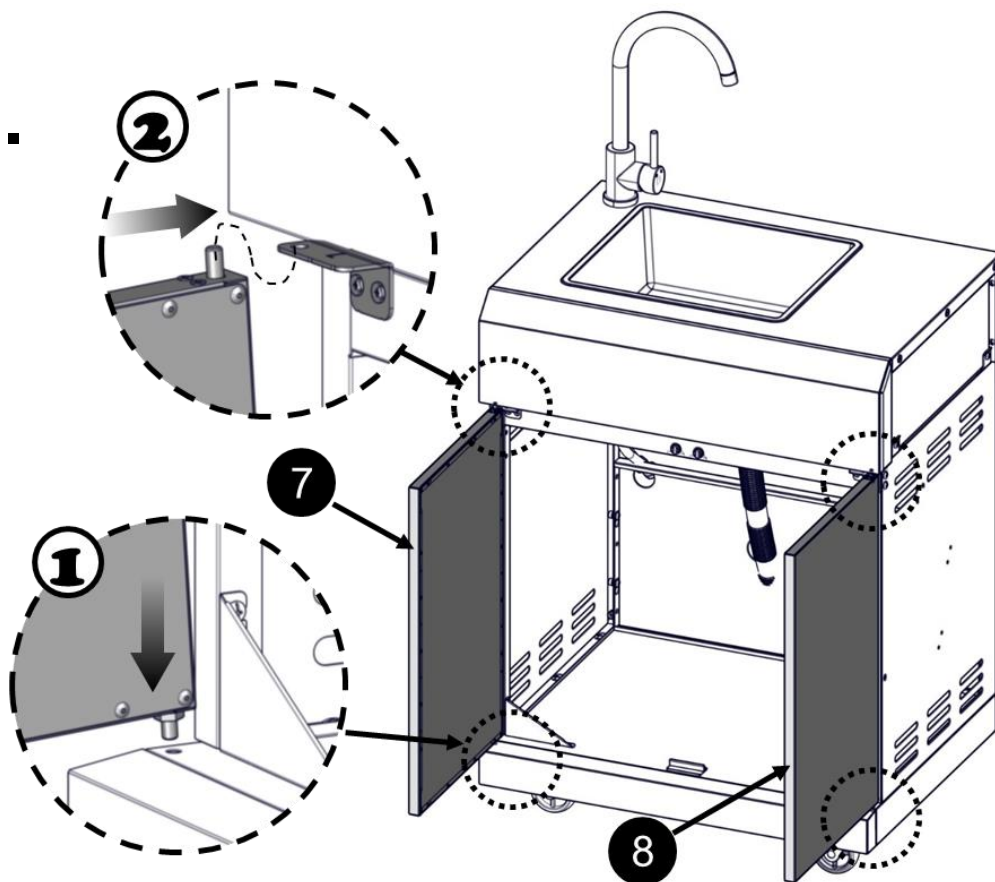
19.



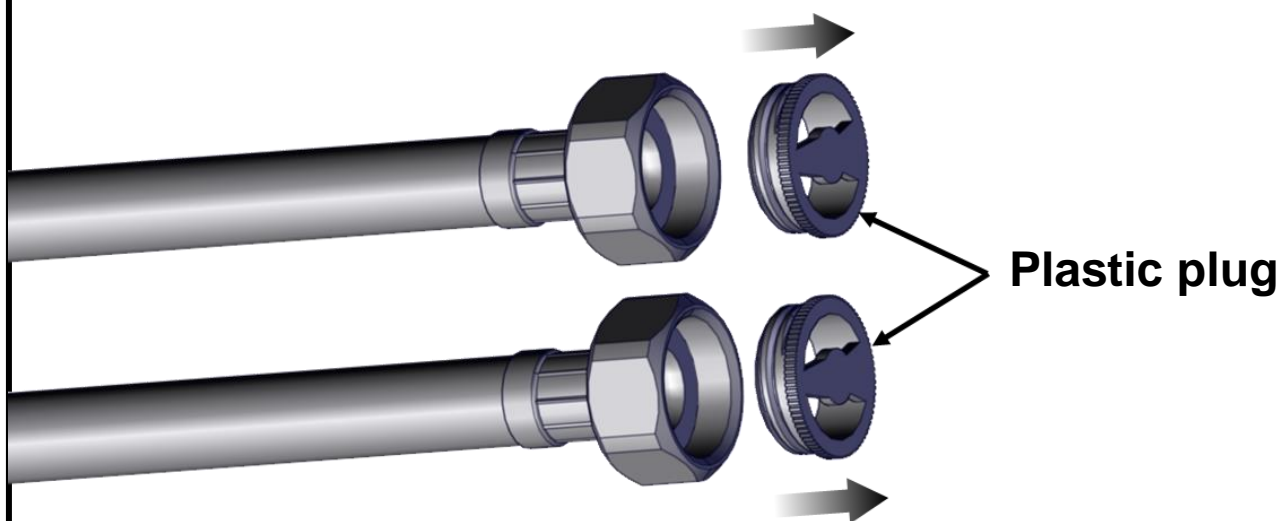
20.



21.



22.

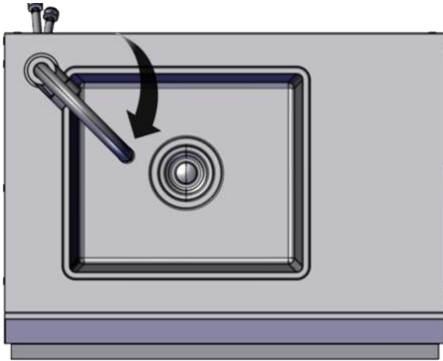


Note: The inlet pipes include plastic plug. The plastic plug need to be removed before connection with water supply.

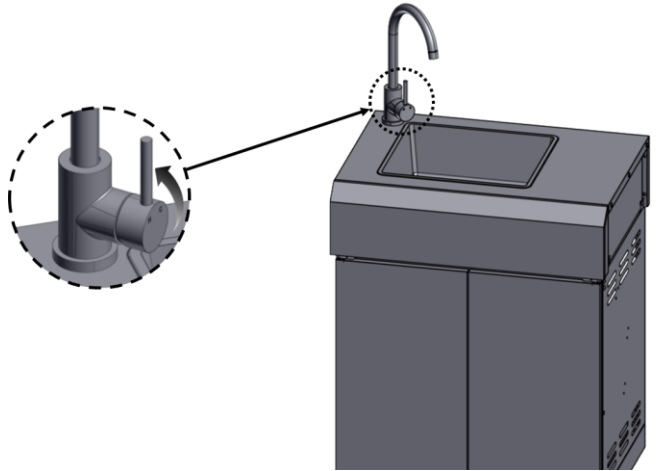
OPERATING INSTRUCTIONS

BEFORE FIRST USE:

1. After the cold and hot water inlet pipes are firmly connected to the water supply, do not use the faucet immediately. Check whether there is leakage in the pipes and joints first.
2. After confirming that there is no leakage in the pipes and joints, do not open the faucet switch in a hurry, rotate the faucet outlet and align the faucet outlet pipe with the sink (as shown in the figure below), to prevent water from running out of the sink.



3. To close the faucet, flip the switch handle in the opposite direction (as shown in the figure below). Do not use excessive force when closing the faucet switch to avoid damaging the faucet spool.



WARNING

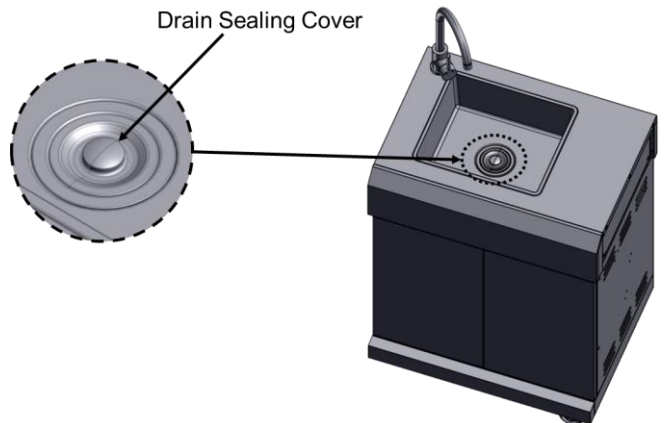
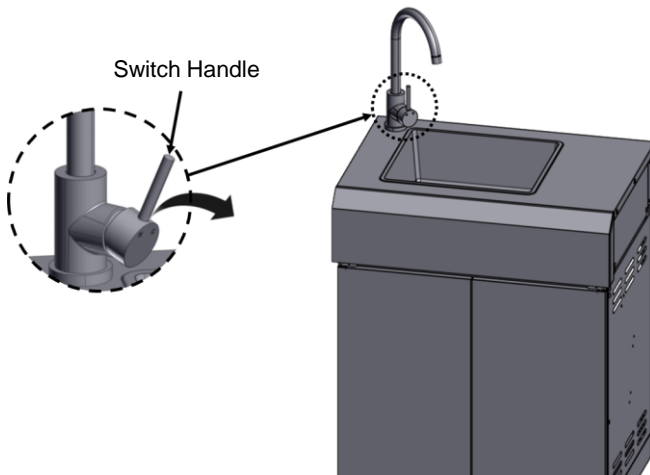
Keep unit away from strong acid environment when in use.

USING DRAIN SEALING COVER:

1. The drain sealing cover can be closed. When opening the faucet to allow water in the sink, keep watch to avoid the water from overflowing. It is recommended that the water level does not exceed 2/3 of the tank volume.

OPENING AND CLOSING SINK:

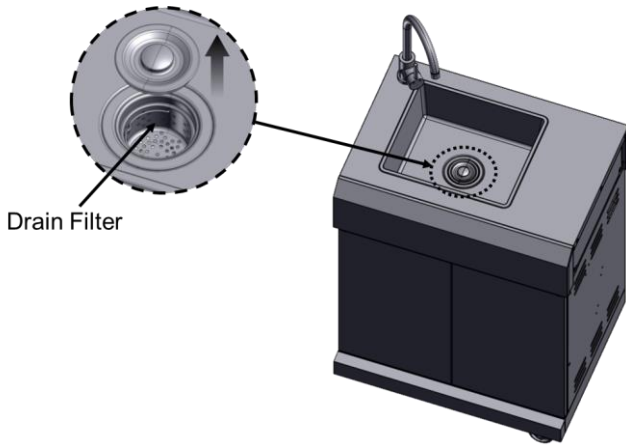
1. Once the cold and hot tap water are connected, turn the faucet switch handle backward to open the faucet. Do not pull back with excessive force to avoid damaging the faucet spool.
2. The faucet switch can be turned left and right to switch between cold and hot water. Turn the switch handle to the left for hot water and to the right for cold water.



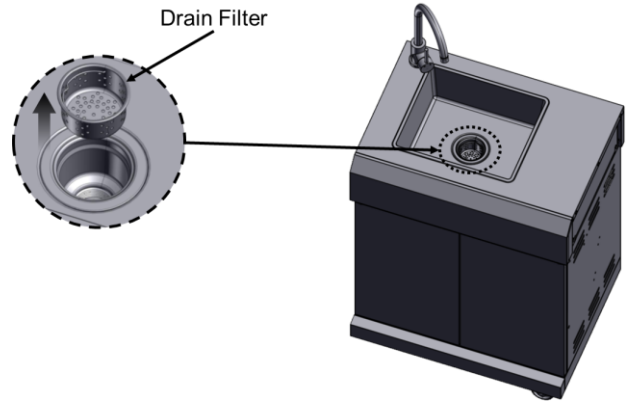
2. Before opening the drain sealing cover and allowing the water to be discharged, be sure to remove any coarse residue in the sink first.

OPERATING INSTRUCTIONS

3. Once any residue has been removed, the drain sealing cover may be pulled out. Do not remove the drain filter to avoid any residue from blocking the drainage pipe.



4. After all the water in the sink has been discharged, remove the drain filter and pour any internal residue in the trash.
5. Clean the drain filter and put the drain sealing cover on top.



CARE AND MAINTENANCE

General Cleaning

For routine cleaning, wash with soap and water using a soft cloth or sponge. Rinse with clean water and dry at once with a soft, lint-free cloth to avoid spots and streaks.

Do not use steel wool to clean the basin, as it will scratch the surface.

STAINLESS STEEL

IMPORTANT: To avoid damage to stainless steel surfaces, do not use soap-filled scouring pads, abrasive cleaners, cooktop polishing creme, steel wool, gritty wash cloths, or paper towels. Cleaner should not contain chlorine. Damage may occur. The quality of this material resists most stains and pitting, providing that the surface is kept clean, polished, and covered.

Cleaning Method:

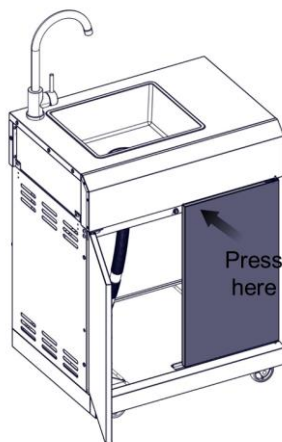
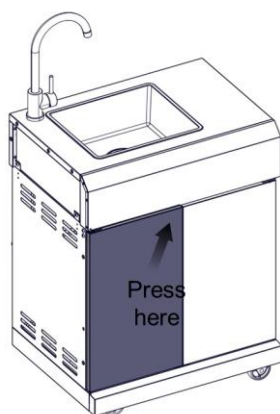
- Rub in direction of the grain to avoid scratching or damaging the surface.
- Use stainless steel cleaner.
- Liquid detergent or all-purpose cleaner.
- Rinse with clean water and dry with soft, lint-free cloth.
- Vinegar to remove hard water spots.
- Glass cleaner to remove fingerprints.

OPENING AND CLOSING DOORS

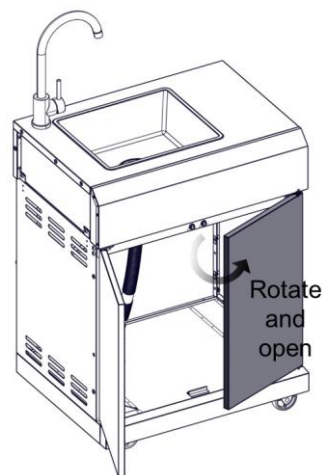
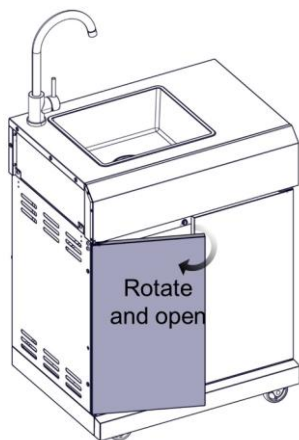
Your Cucina Basin door is equipped with push to open latch.

Opening Doors

To open a door, it takes a gentle press on the door front.

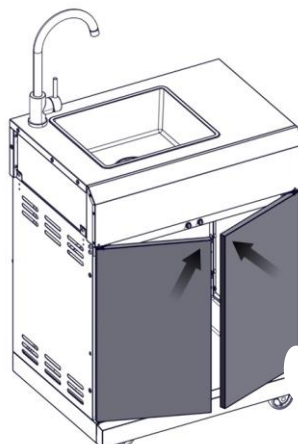


Then swing the door open.



Closing Doors

CLOSE the doors and press them to secure.



WARRANTY AND CONSUMER GUARANTEE

Barbeques Galore Warranty is provided in addition to other rights and remedies as set out below under 'Consumer Guarantees'.

Warranty Term

Subject to the conditions set out below, this product is warranted to the purchaser to be free from defects in workmanship and materials from the date of purchase for the terms specified below.

STAINLESS STEEL PARTS: 3 Year LIMITED warranty against perforation, does not cover surface corrosion, scratched and rust.

ALL OTHER PARTS: 1 Year LIMITED warranty; does not cover chipping, scratching, cracking surface corrosion, scratches or rust.

Warranty Conditions

1. Barbeques Galore warranty is non transferable and is limited to the original purchaser.
2. Satisfactory proof of the purchase (as defined in the Competition and Consumer Act 2010 (CCA)) must be furnished at the time of notification of the defect for a claim under this warranty to be enforceable.
3. This warranty covers all parts found to be defective in workmanship and/or materials during the warranty period. Barbeques Galore total liability in respect of a claim by a consumer under the CCA for a minor problem (as defined in the CCA) with a product is limited, at our option, to providing the consumer with a refund, replacement product or repairing the product.
4. For major failures (as the term is defined in the CCA) you are entitled to a replacement or refund and for compensation for any other reasonably foreseeable loss or damage.
5. To implement this warranty, please return the product to the place of purchase or nominated service agent, otherwise a service call out fee will be charged and refunded if claim is warrantable.

Installation Conditions

1. All installations must conform to the applicable Gas, Electrical and Building standards as laid down by the local codes for state or region.

Warranty Exclusions

1. This warranty will be void and accordingly no claim of any nature will be enforceable if the product has not been assembled, installed or operated according to the instructions, or has been subject to abuse, improperly treated, neglected and/or if any repairs, maintenance or service has been done by an unauthorised person.
2. This warranty does not cover
 - rust due to improper care or lack of maintenance. Contact your place of purchase for care and maintenance instructions
 - commercial use
 - claims arising from damage caused by abrasive chemical cleaners, heat discoloration or fat fires

Consumer Guarantee

Our goods come with guarantees that cannot be excluded under the Australian Consumer Law. You are entitled to a replacement or refund for a major failure and for compensation for any other reasonably foreseeable loss or damage. You are also entitled to have the goods repaired or replaced if the goods fail to be of acceptable quality and the failure does not amount to a major failure.

Subject to the above paragraphs, all express or implied representations, conditions, statutory guarantees, warranties and provisions (whether based on statute, common law or otherwise), relating to this warranty, that are not contained in it, are excluded to the fullest extent permitted by law.

Nothing in this warranty excludes, restricts or modifies any condition, warranty, statutory guarantee, right or remedy, implied or imposed by common law, statute or regulation, which cannot be lawfully excluded, restricted or modified.

For Customer Reference (file in a safe place)

Purchased from _____

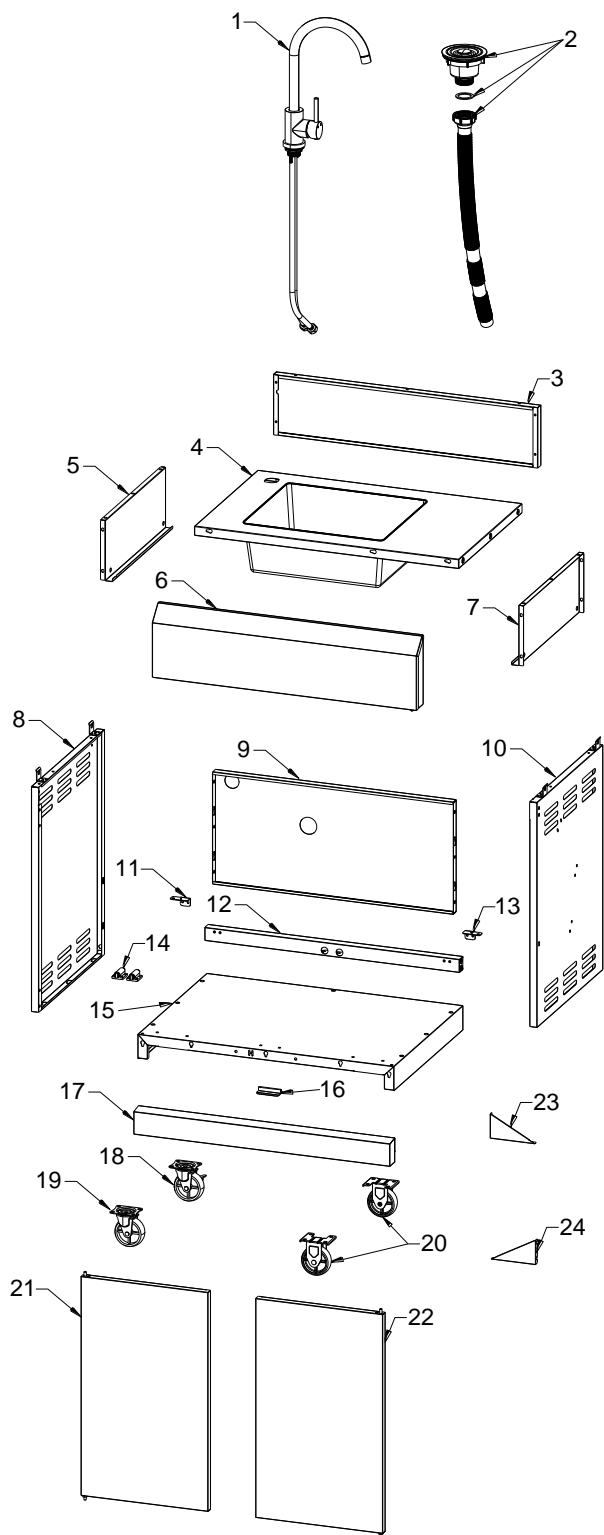
Date Purchased ____/____/____ Record Serial Number _____

N.B Satisfactory proof of purchase like your sales docket must be kept for any claim under this warranty to be enforceable. Service Contact Point – Please contact your place of purchase for warranty repairs or service.

BRANCHES AUSTRALIA WIDE

Barbeques Galore Limited,
Building A2, Campus Business Park, 350-374 Parramatta Road, Homebush, NSW 2140
Customer Care Telephone 1 300 139 867, Store Locator Telephone 1 800 978 555
e-mail: CSR1@bbqgalore.com.au
Website: www.bbqgalore.com.au

EXPLODED VIEW



PARTS LIST

No.	Part (Description)	QTY	No.	Part (Description)	QTY
1	Faucet assembly	1	13	Door hinge fixed plate, right	1
2	Drainer assembly	1	14	Push latch	2
3	Firebox rear panel	1	15	Bottom panel	1
4	Countertop and sink assembly	1	16	Door iron piece	1
5	Firebox left panel	1	17	Bottom panel trim piece	1
6	Main control panel assembly	1	18	Swivel caster with brake	1
7	Firebox right panel	1	19	Swivel Caster	1
8	Side panel, left	1	20	Caster	2
9	Rear panel	1	21	Door, left	1
10	Side panel, right	1	22	Door, left	1
11	Door hinge fixed plate, left	1	23	Triangle bracket, right	1
12	Cart frame, top	1	24	Triangle bracket, left	1

THIS PAGE INTENTIONALLY LEFT BLANK

**Contact your Barbeques Galore customer care at 1 300 139 867
for after sales service and support or the store locator at 1 800 978 555 .**

