



5270 Edison Ave., Chino, CA 91710

(Tel) 800-790-1299 (Fax) 909-718-1949

NOTICE

Dear Customers:

Thank you for choosing our barbeque grill and hope that you enjoy our product.

Our gas valves and components are preset at the factory to operate on Liquid Propane (LP). If you wish to convert your grill from LP to Natural Gas (NG), we strongly recommend that you hire a professionally trained technician to convert the unit. Please understand that we will not be responsible for any liability, personal injury, or property damage resulting from an improperly converted grill.

We will provide warranty parts for this product after it is converted, however, we will not honor any warranty claims for parts damaged during the conversion of the original LP valves and orifices to NG configuration if the conversion is done improperly.

⚠ WARNING! FAILURE TO HEED THESE WARNINGS COULD RESULT IN A FIRE OR EXPLOSION THAT COULD CAUSE SERIOUS BODILY INJURY, DEATH OR PROPERTY DAMAGE.

Installation of this Natural Gas Conversion kit must be performed by a QUALIFIED GAS TECHNICIAN ONLY. DO NOT ATTEMPT TO INSTALL THIS KIT YOURSELF. Improper installation could result in a gas leak which could cause a fire or explosion and cause serious bodily injury, death or property damage. Leaks due to improper installation could occur immediately or slowly over time. If you hear any unusual noises or leaks, smell gas or unusual odors, or notice anything unusual with the operation of your gas appliance after the installation, immediately shut off the gas supply and discontinue use until the appliance is repaired by a QUALIFIED GAS TECHNICIAN.

If there are damaged or missing parts when you unpack this kit, call [1-800-913-8999](tel:1-800-913-8999). DO NOT have your QUALIFIED GAS TECHNICIAN attempt to install this kit until you receive replacement for any damaged or missing parts.

Orifice Chart

The different burner valves in this grill have different BTU ratings. This means that the amount of gas coming from each orifice varies in order to create the BTU's. The holes in the orifices themselves are drilled to different sizes so as to allow the proper amount of gas to flow through them. Please note the chart below as an easy reference for the various orifice opening sizes for the different valves in the grill.

720-0650B, 730-0650B / 810-0010, 830-0010 orifices size

Orifice Sizes and BTU Ratings				
	LP		NG	
Components	Orifice Size	BTU	Orifice Size	BTU
Main Burner	0.94	10K	1.55	10K
Rear Burner	1.07	13K	1.84	13K
Searing Side Burner	1.15	15K	1.90	15K

Tools are required for converting from LP to NG.

Below tools and orifices are provided.



Allen Key



6mm Wrench (Optional: 10mm)



6mm Nut Driver



730-0650A/ 830-0010 NG Rear Burner Orifice (Option 1)



730-0650A NG Rear Burner Orifice (Option 2)



NG Searing Side Burner Orifice

Below tools are not provided.



Phillips Head Screwdriver (+)



Monkey Wrench

NG Regulator Hose and Regulator Conversion

Tools required:



Phillips Head Screwdriver (+)



Monkey Wrench



WARNING

Make sure all grill components are completely cooled and gas supply is turned off and removed from grill prior to performing the conversion.

1. Install the regulator hose (short hose) to the end of the regulator marked "OUT." Install the brass connector to the other end of the regulator marked "IN." (If regulator, hose, and brass connector are pre-assembled, you may disregard this step.)



2. Turn all knobs to OFF. Turn off LP gas supply and remove the LP cylinder from the grill cart. Remove the brass adapter of the LP regulator from the manifold with a wrench.



3. Install the NG regulator hose to the manifold and secure using a wrench.



4. Remove two screws and washers from the regulator then tighten NG regulator on the right side panel from inside to outside.



Main Burner Conversion



Phillips Head Screwdriver (+)



6mm Nut Driver

1. Remove the rotisserie kit, warming rack, cooking grids, and flame tamers from the firebox.

Remove the main tube burners by removing the screw securing the burners near the back wall of the firebox and the screws near the front of the firebox that secure the igniter brackets to the burners. Gently lift the tube burners up and out



2. Locate and remove the LP orifice at the end of each valve with a 6mm nut driver. The main burner NG orifices are located behind the LP orifices, so no additional orifices need to be installed.

⚠ CAUTION: The NG orifice is easily loosened or even removed together with the LP orifice when the LP orifice is being unscrewed. Make sure the NG orifices are securely installed on the main burner valves after the LP orifices are removed



⚠ CAUTION

When converting the grill, screw the orifice in and out of the stem gently.

3. Reinsert tube burners.

⚠ CAUTION: Make sure the valve with orifice is inserted into the burner venturi. Restore the igniter brackets; adjust the distance between the burner and the corresponding igniter for proper ignition.



Searing Side Burner Conversion

Tools required:



Phillips Head Screwdriver (+)

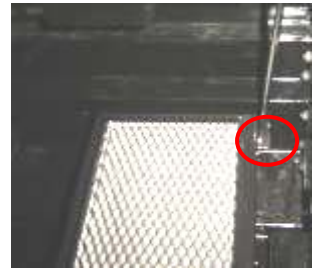


6mm Nut Driver

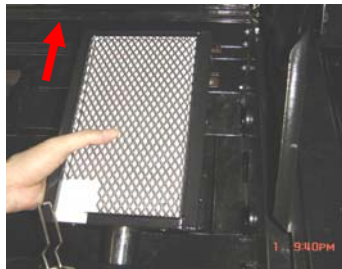


6mm Wrench

1. Loosen the igniter wire screws, searing main burner brace screws, and back two screws securing searing side burners.



2. Take out the searing side burner from the firebox. Locate orifice on end of valve and remove by turning counterclockwise with an 6mm nut driver.



3. Insert NG orifice with a 6mm nut driver and secure tightly by turning clockwise. Reinsert the searing side burner, tighten all loose screws.



Rear Burner Conversion

Tools required:



Phillips Head Screwdriver (+)



Monkey Wrench



6mm Nut Driver



6mm Wrench
(Optional: 10mm)

1. Remove the cover of the rear burner by removing the screws in the firebox. Use another hand to hold the orifice cover to ensure it doesn't fall.

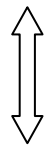


Install burner orifice

2. Use monkey wrench to loosen the orifice nut and take out the orifice holder. Use a 6mm nut driver or Allen key to unscrew and remove the orifice.



Option 1



3. Replace the orifice for LP gas with the orifice for NG. After the orifice is replaced, put the cover of the rear burner back to its original location.

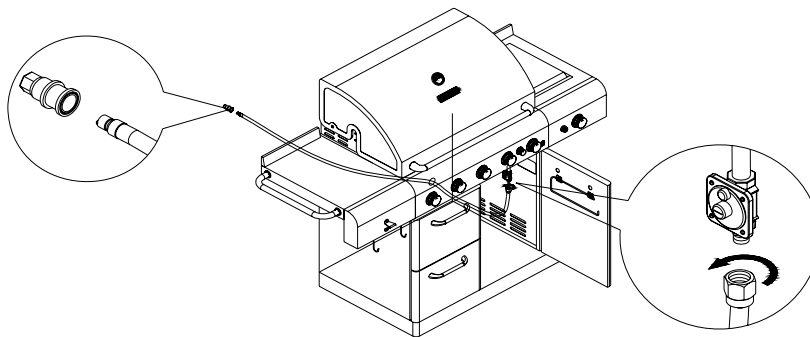


Option 2

10" PVC Gas Hose Conversion

Warning!! Gas Valves are preset at the factory to operate on LP gas or NG gas. If you wish to convert, be sure to consult your gas supplier or trained technician for the conversion.

- A. After the Natural Gas regulator has been installed, attach the PVC Gas hose to the regulator (See drawing below).
- B. Connect the other end of the PVC Gas Hose to the house gas line using the quick-connect fitting. To use the quick connect fitting, lift the head of the connector back. Insert the end of the PVC hose and release the head of the connector. Ensure connection is secure.



If you should have any questions regarding natural gas conversion, please contact customer service at For Assembly Questions, call 1-800-913-8999, 8 AM – 5 PM PST, Monday through Friday.