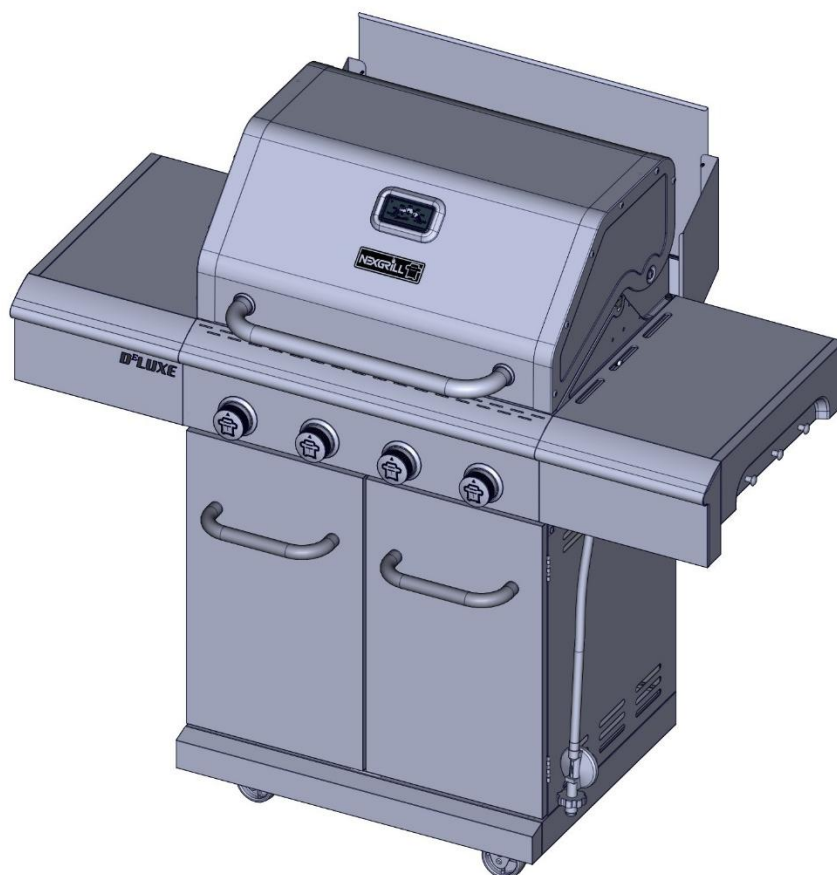




D^ELUXE
dual energy™

Assembly Instructions



19000650A0

Table of Contents

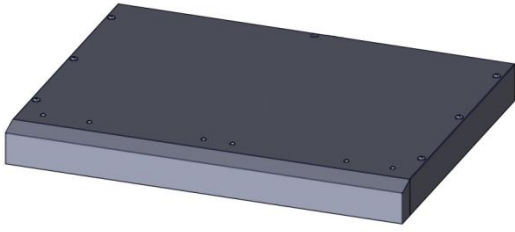
Package Content List	2-4
Preparation	5
Assembly Instructions	6-21

Model No: 720-0958B

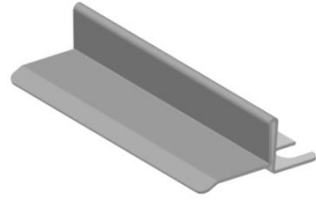
FOR OUTDOOR USE ONLY

Package Parts List

1



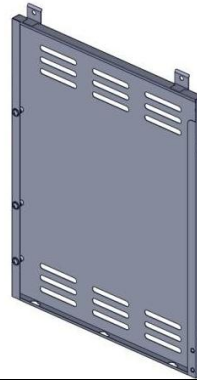
2



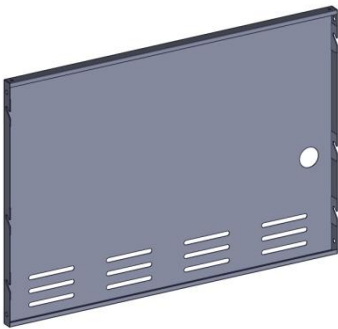
3



4



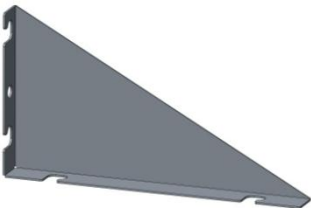
5



6



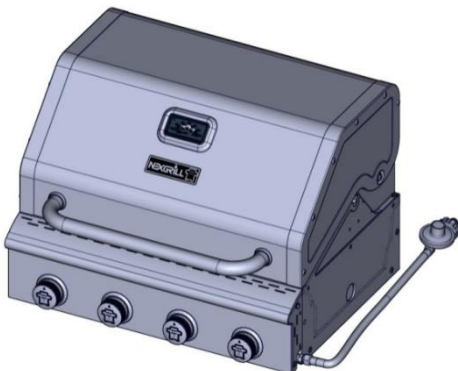
7



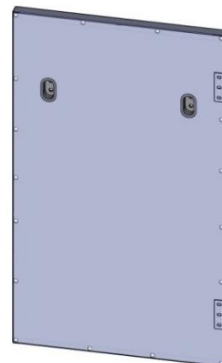
8



9

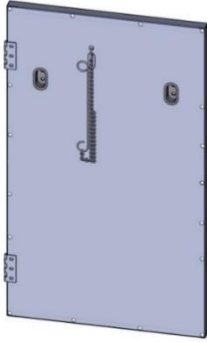


10



Package Parts List

11

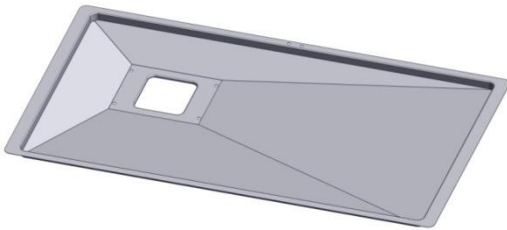


12

x2

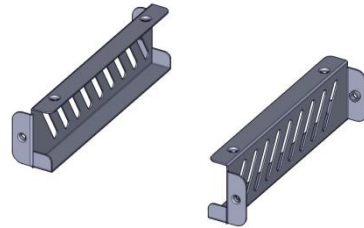


13



14

x2



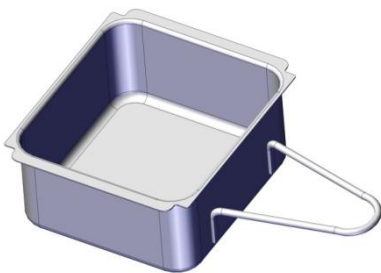
15



16



17



18

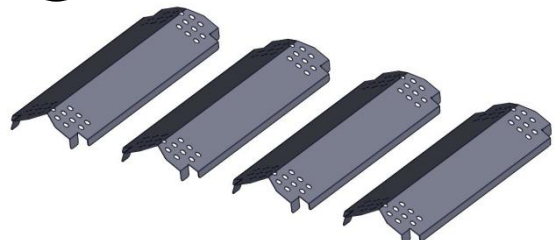


19



20

x4

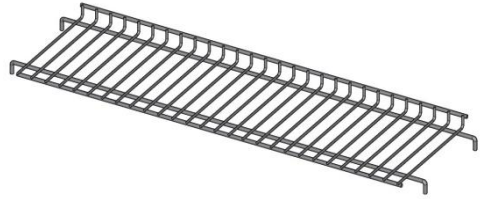


Package Parts List

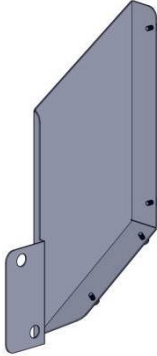
21 x2



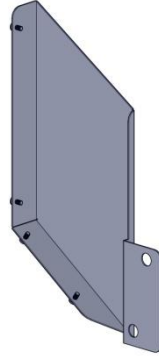
22



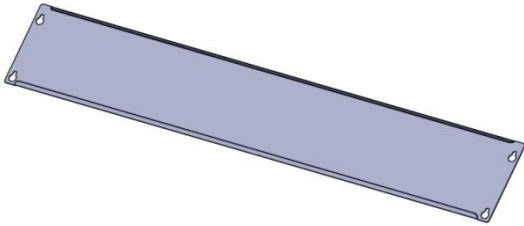
23



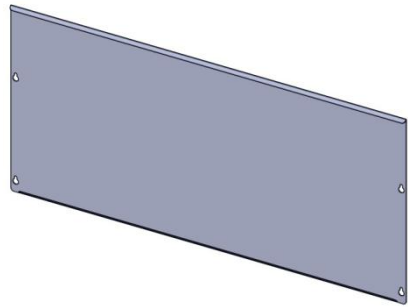
24



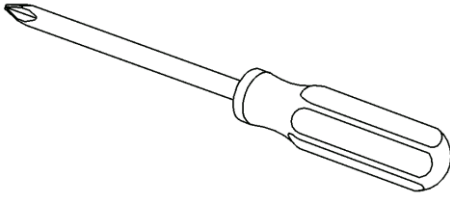
25



26



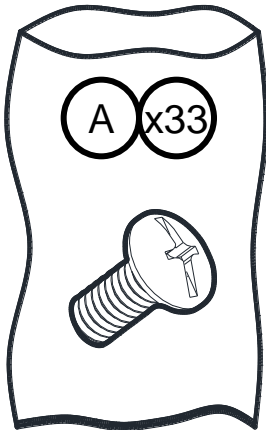
Tools Needed



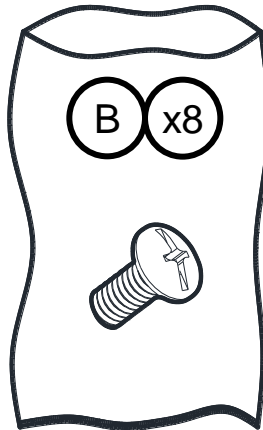
Some parts come with Screws pre-installed.
Loosen and tighten for final assembly.

Hardware Package List

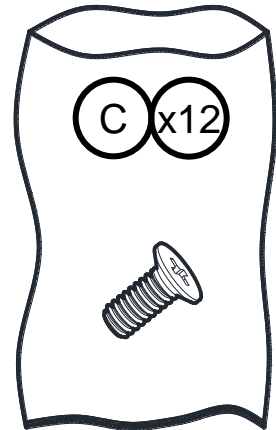
Truss Head Screw
1/4 - 20 x 5/8"



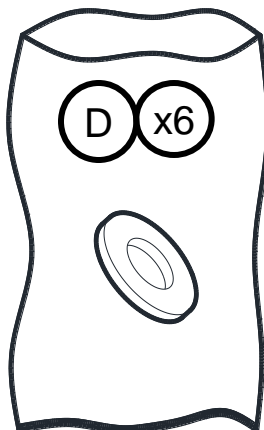
Truss Head Screw
5/32 - 32 x 3/8"



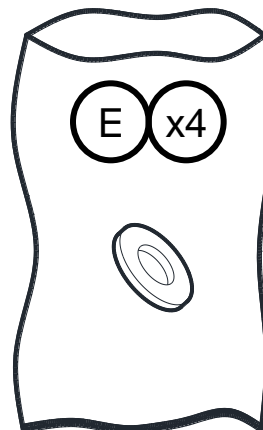
Flat Head Screw
5/32 - 32 x 3/8"

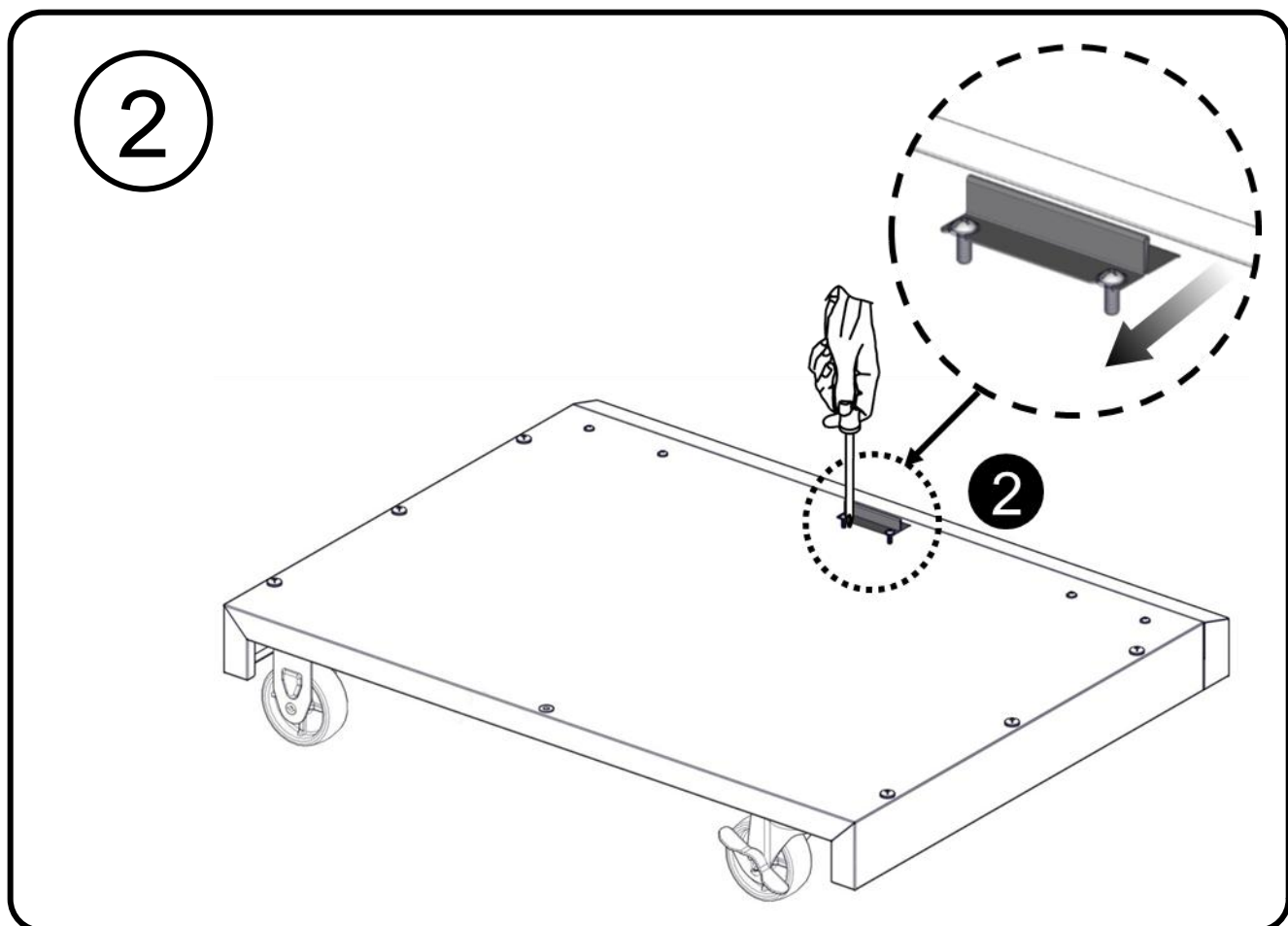
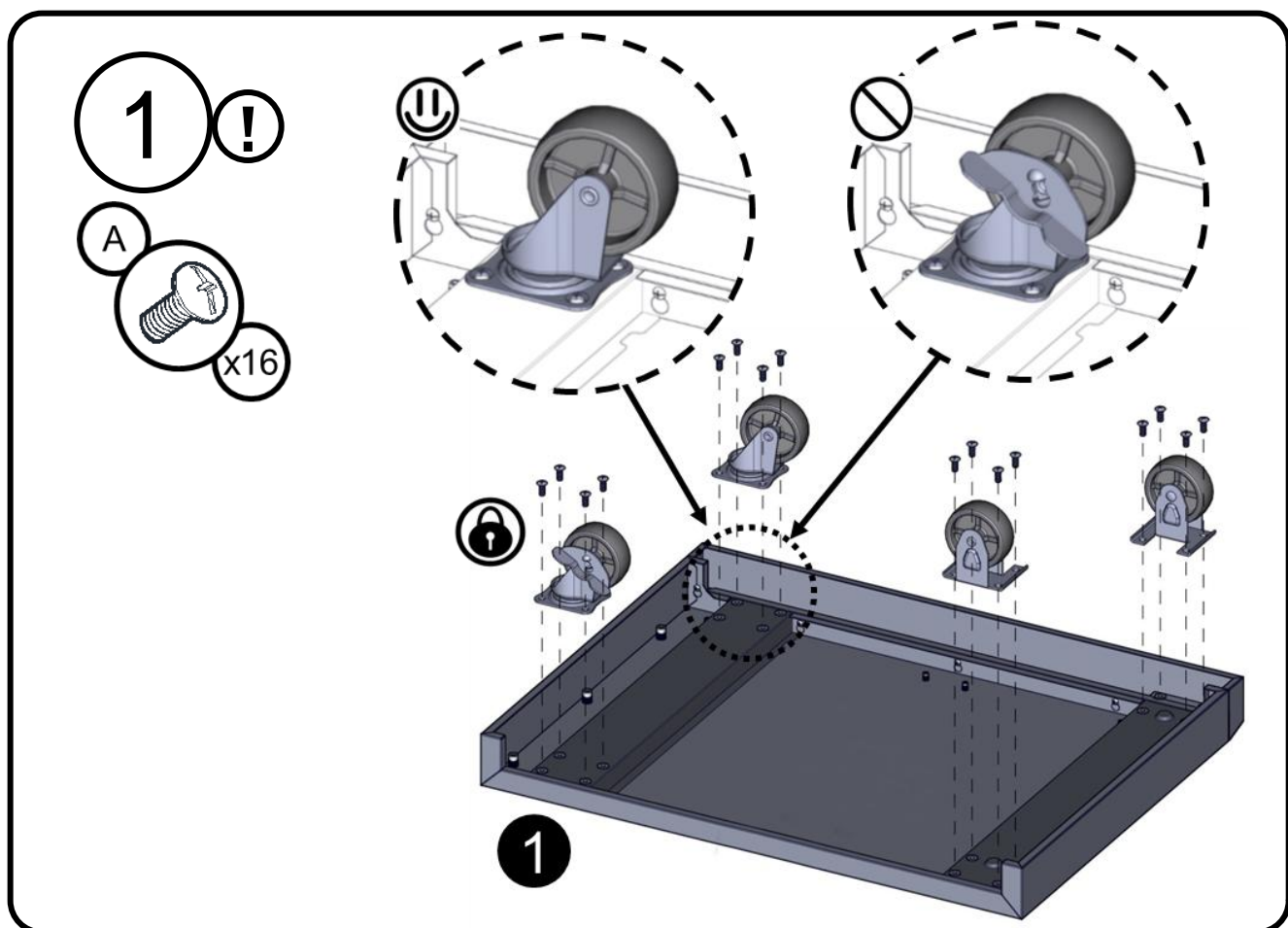


Flat Washer
1/4"

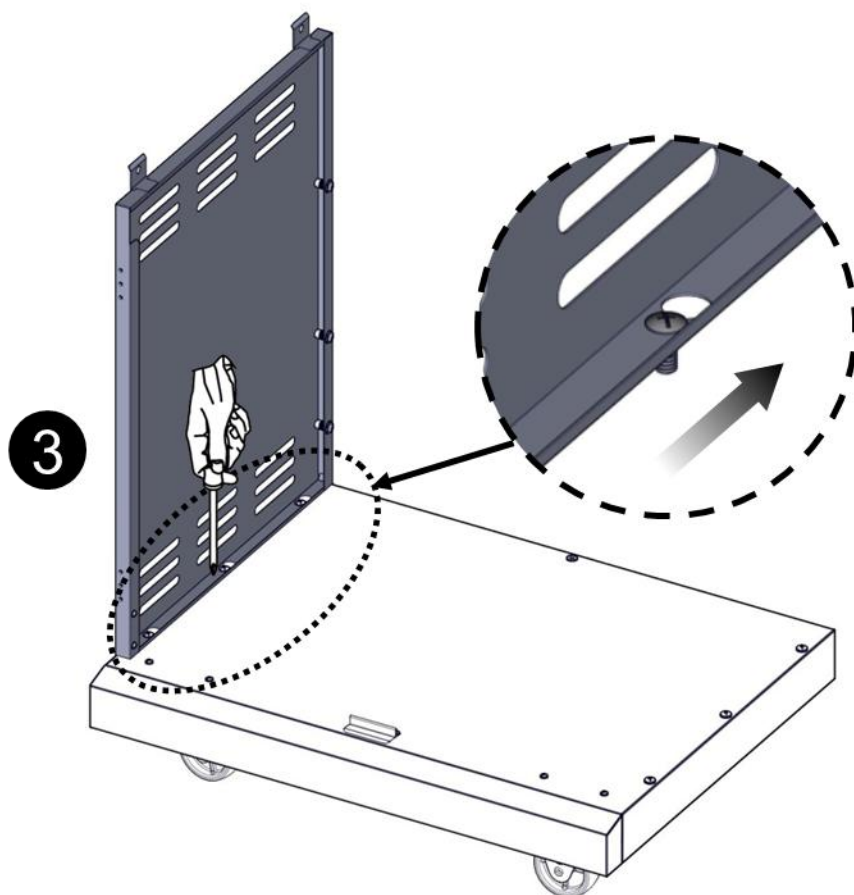


Flat Washer
5/32"

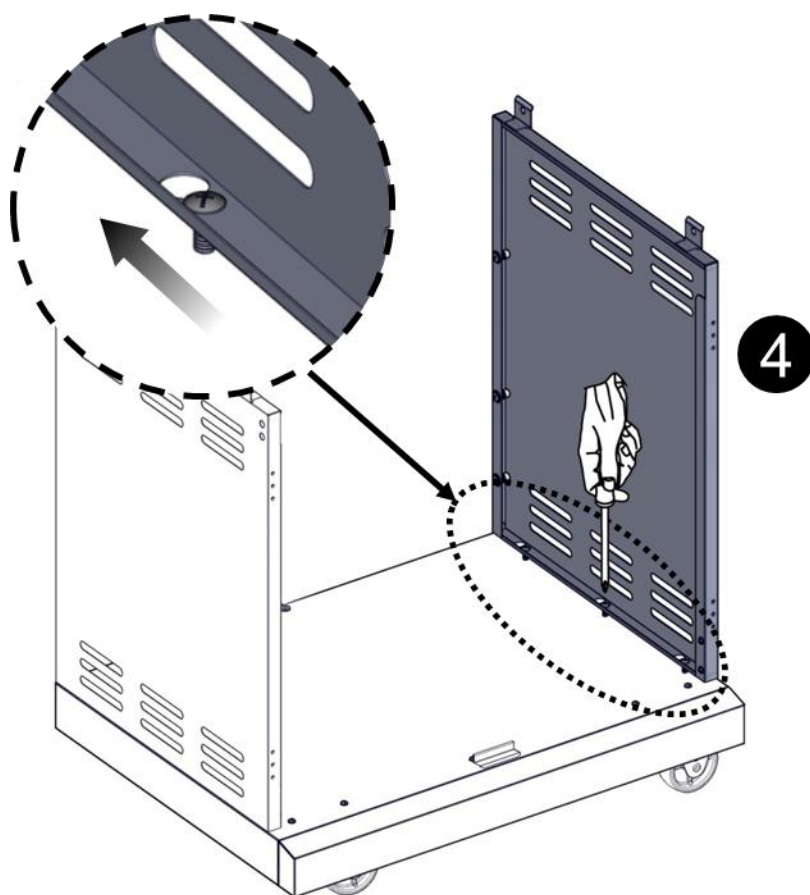


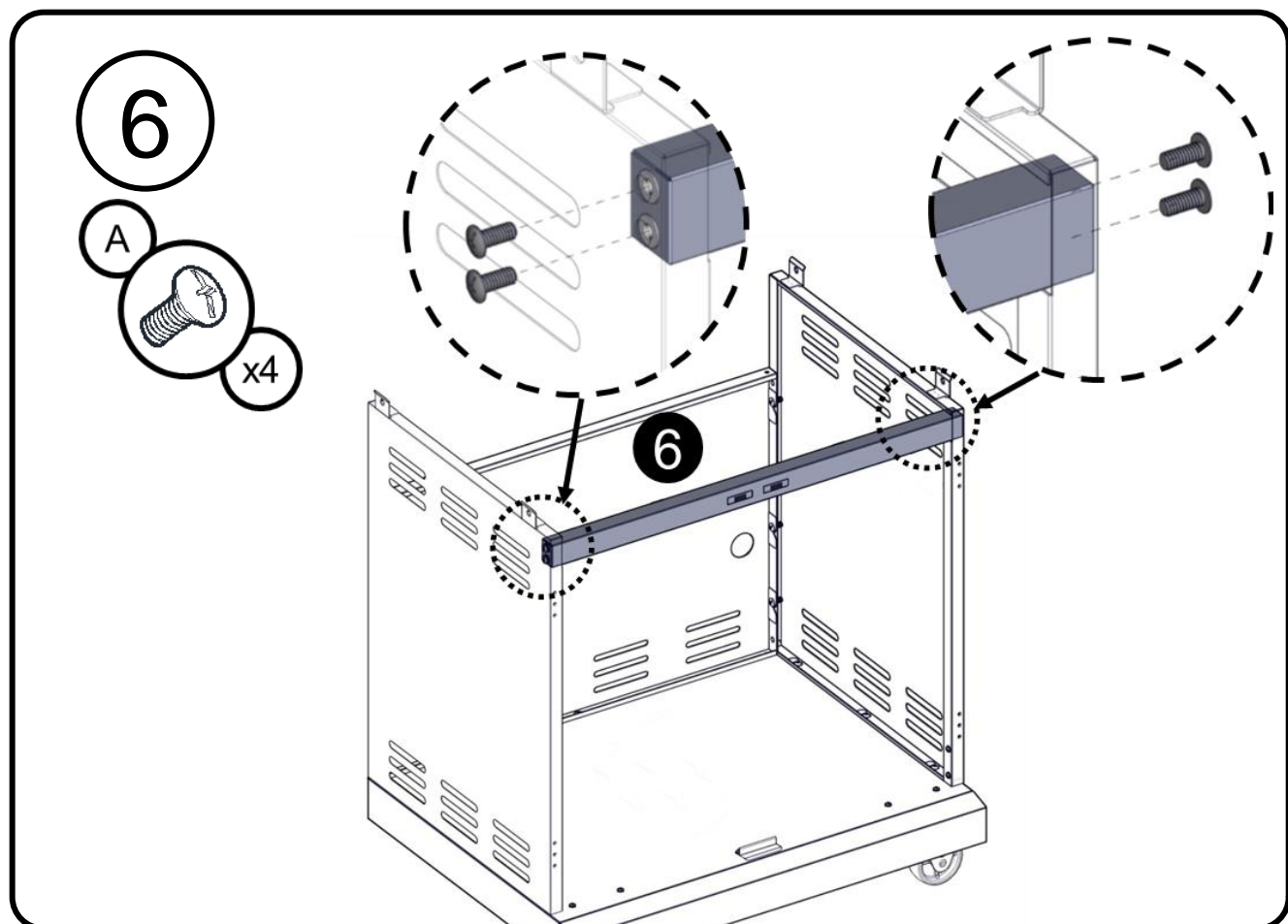
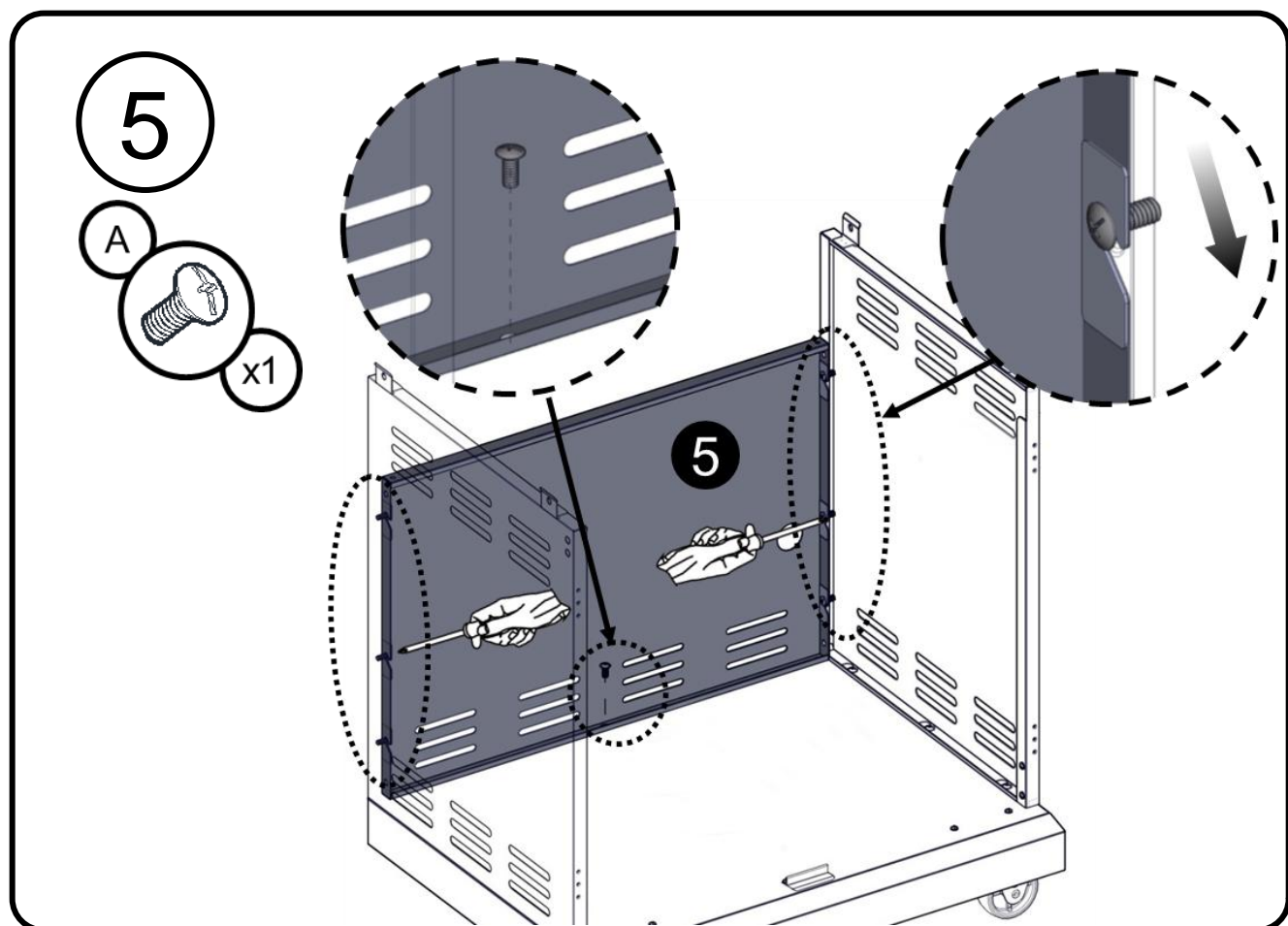


3

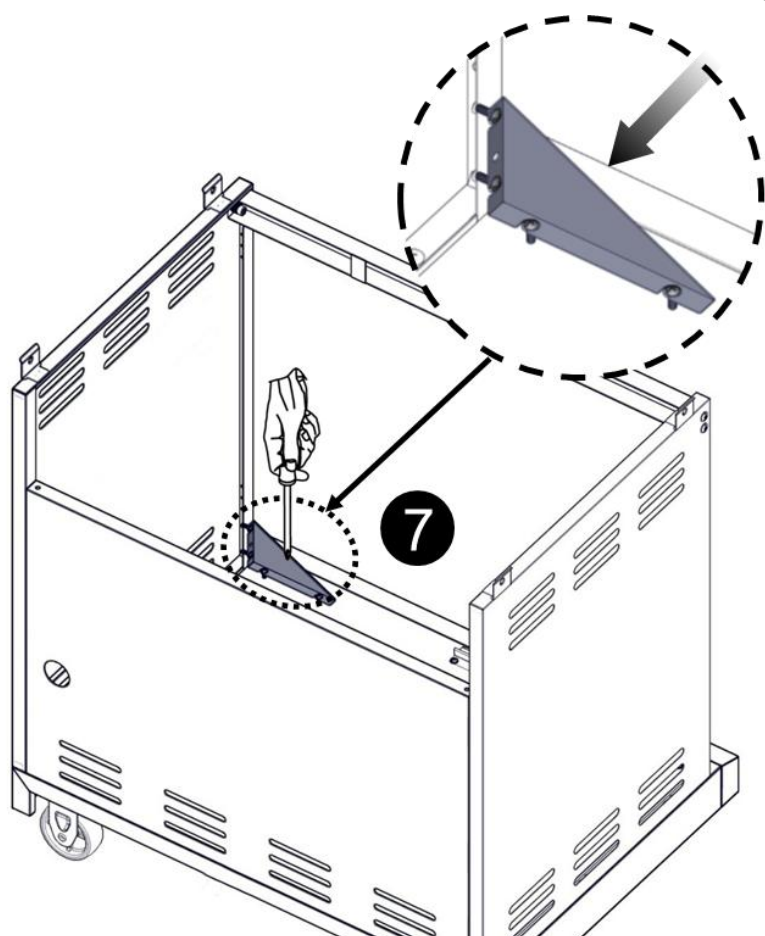


4

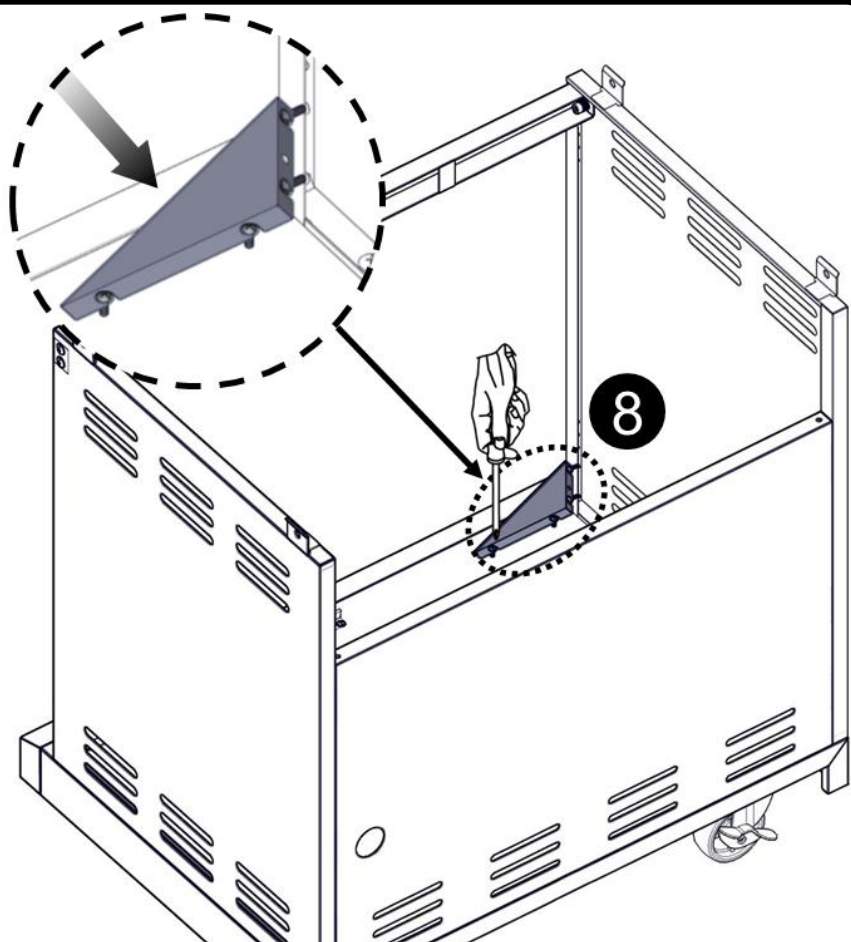




7

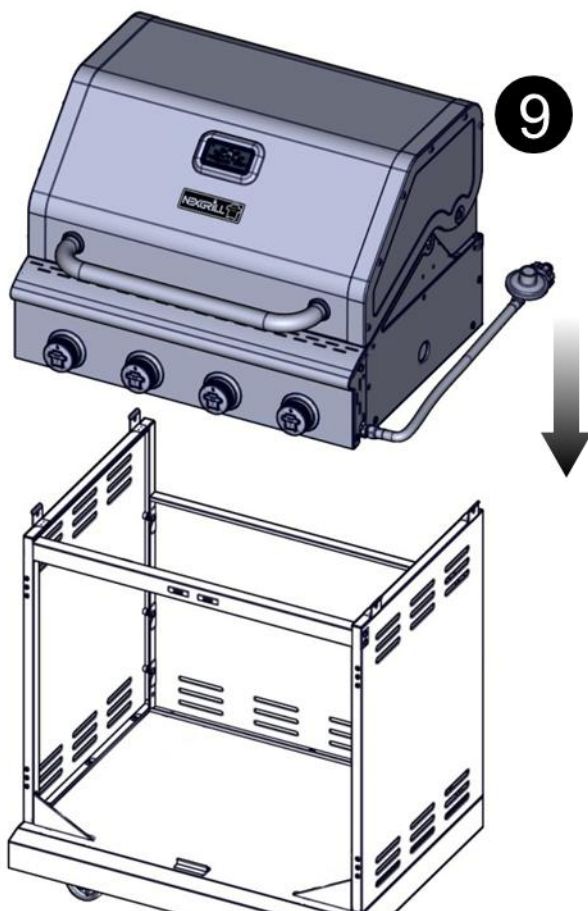


8



9

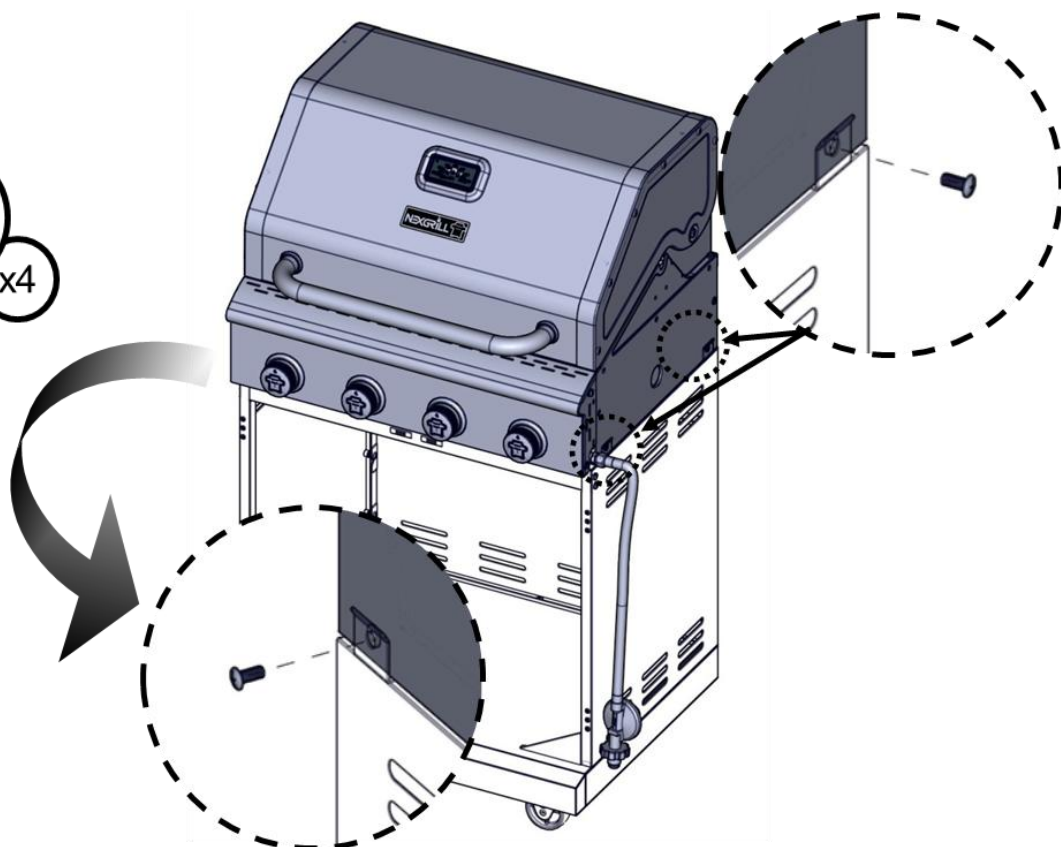
X2



10

A

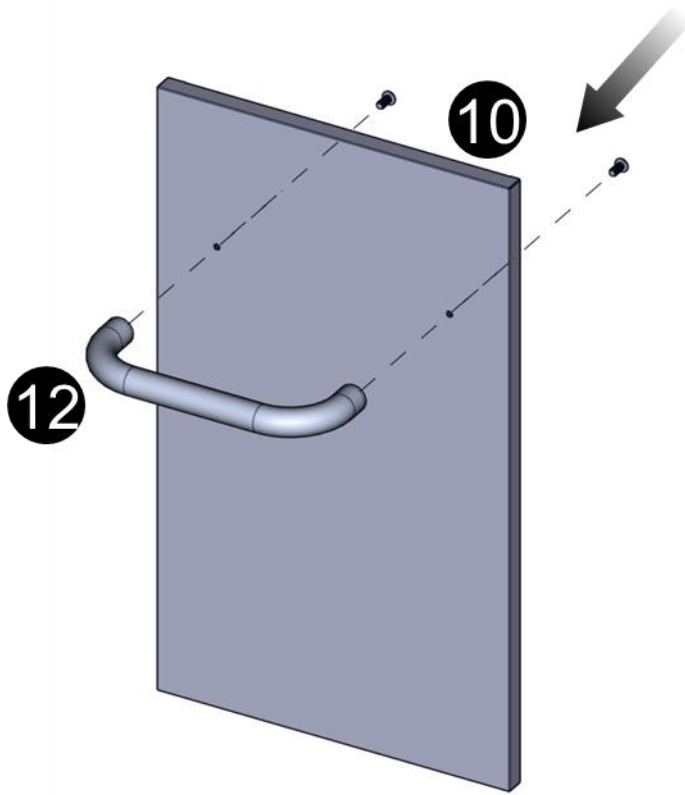
x4



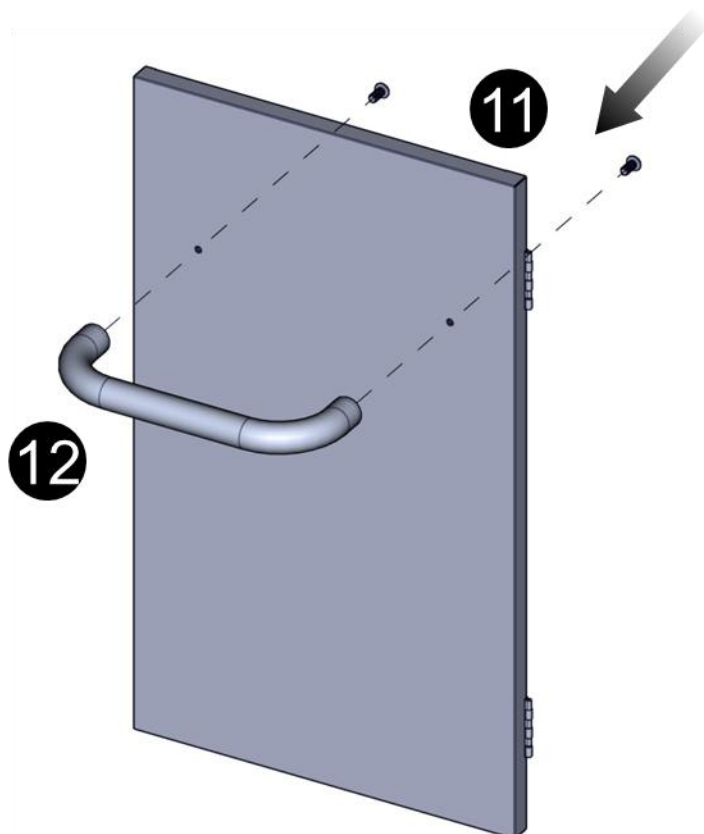
11



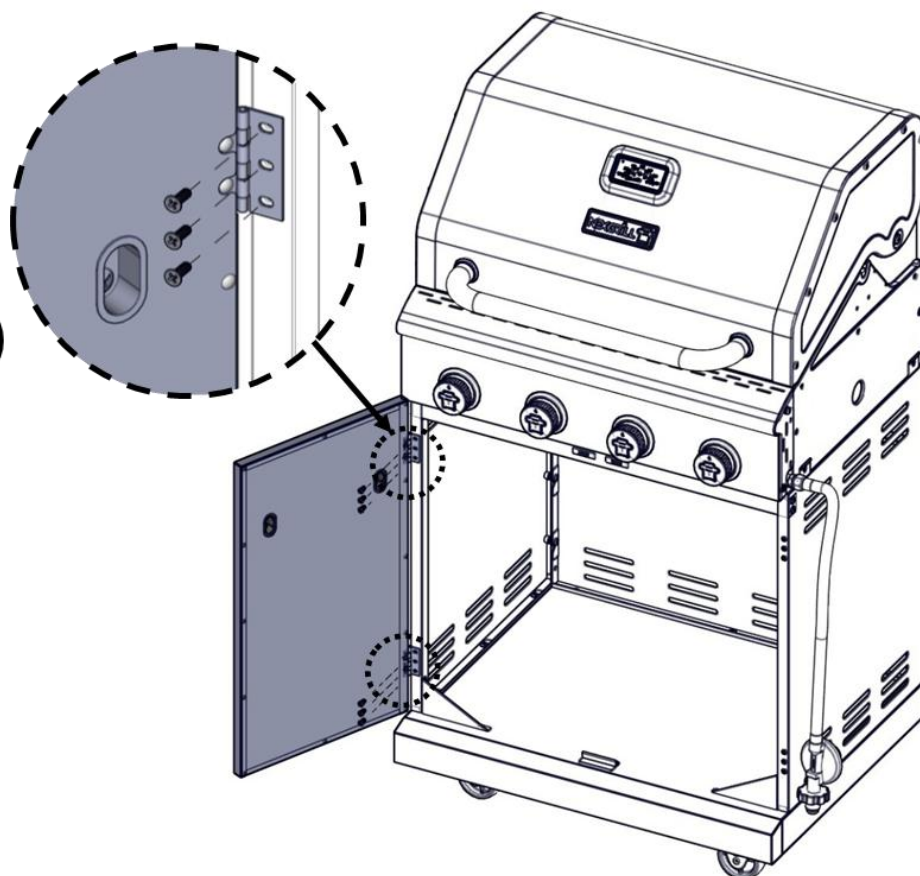
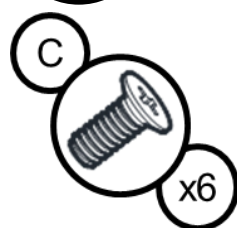
12



13



14

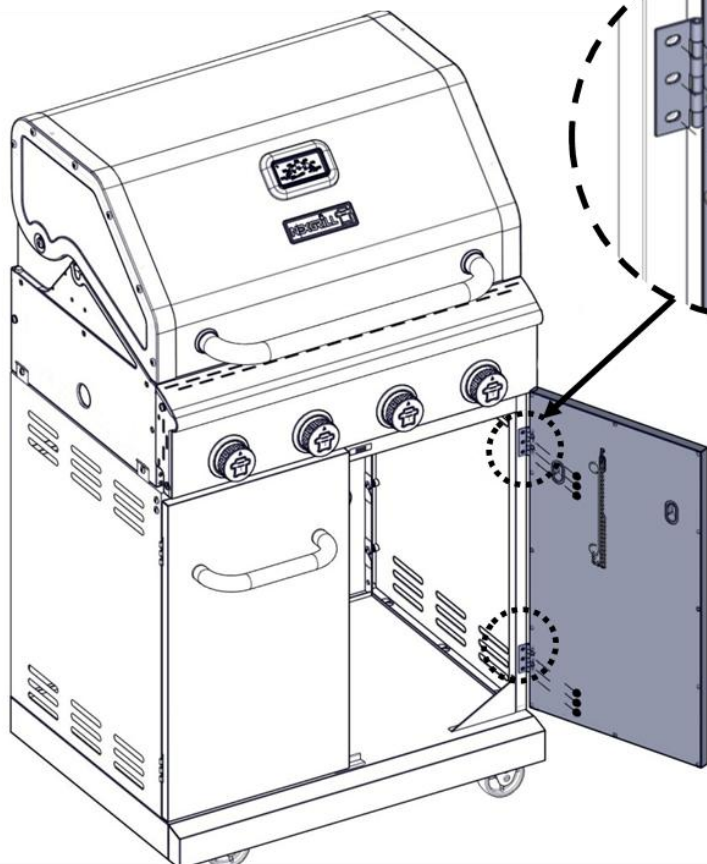


15

C



x6



16

B

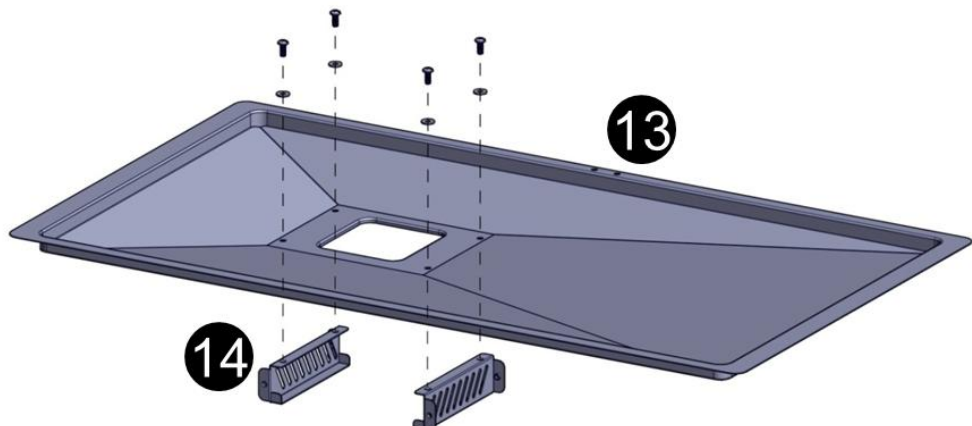


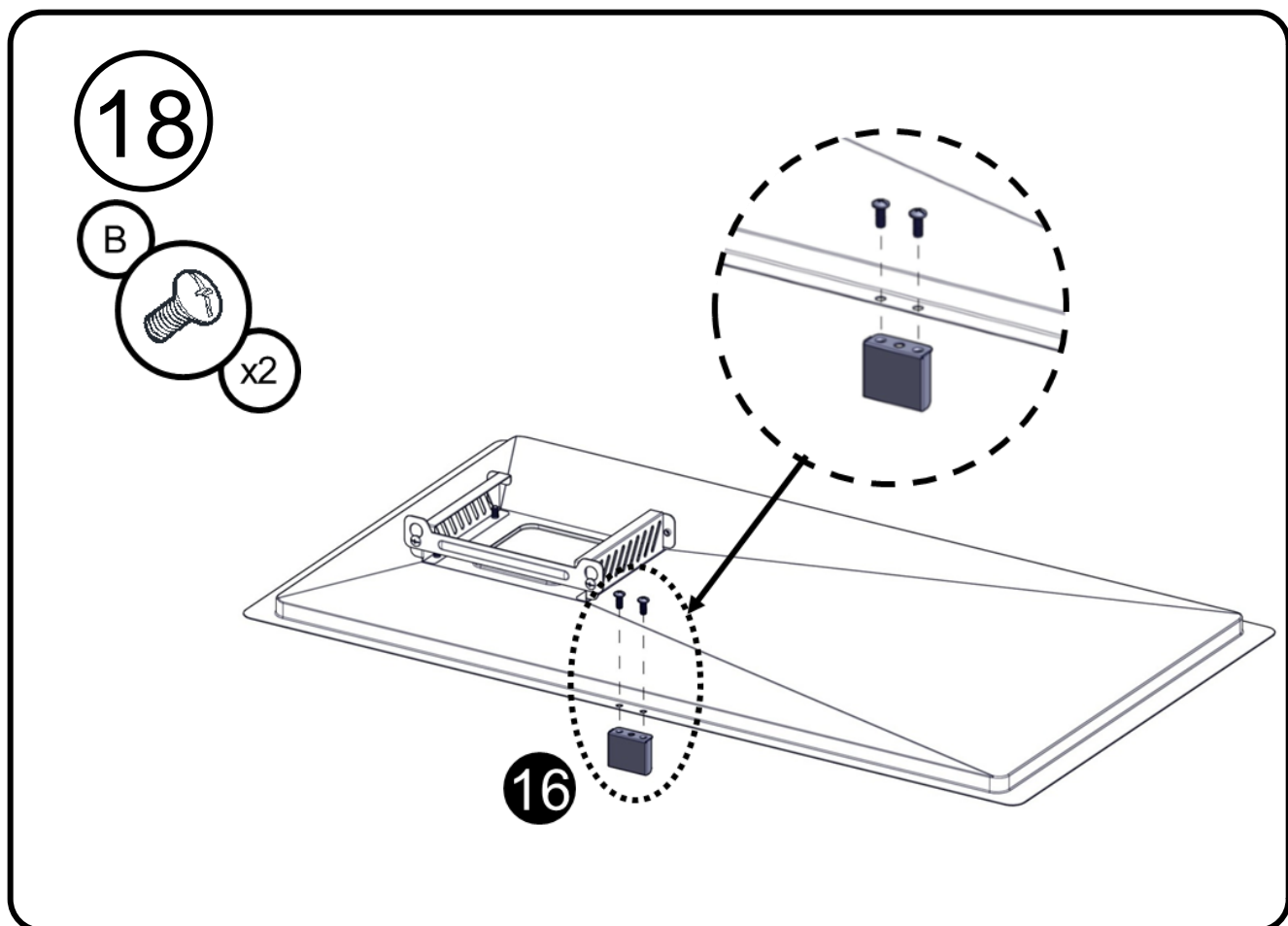
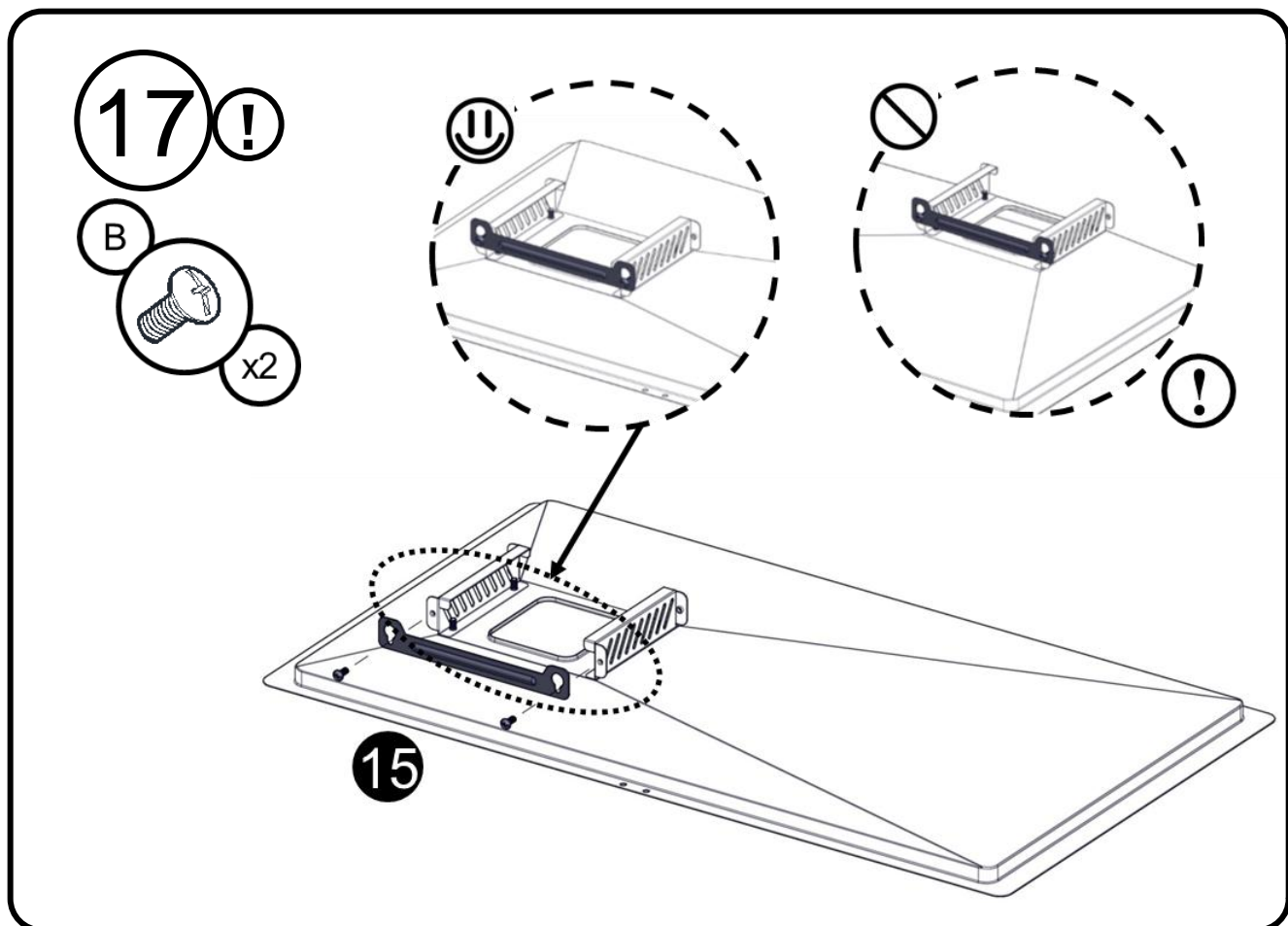
x4

E

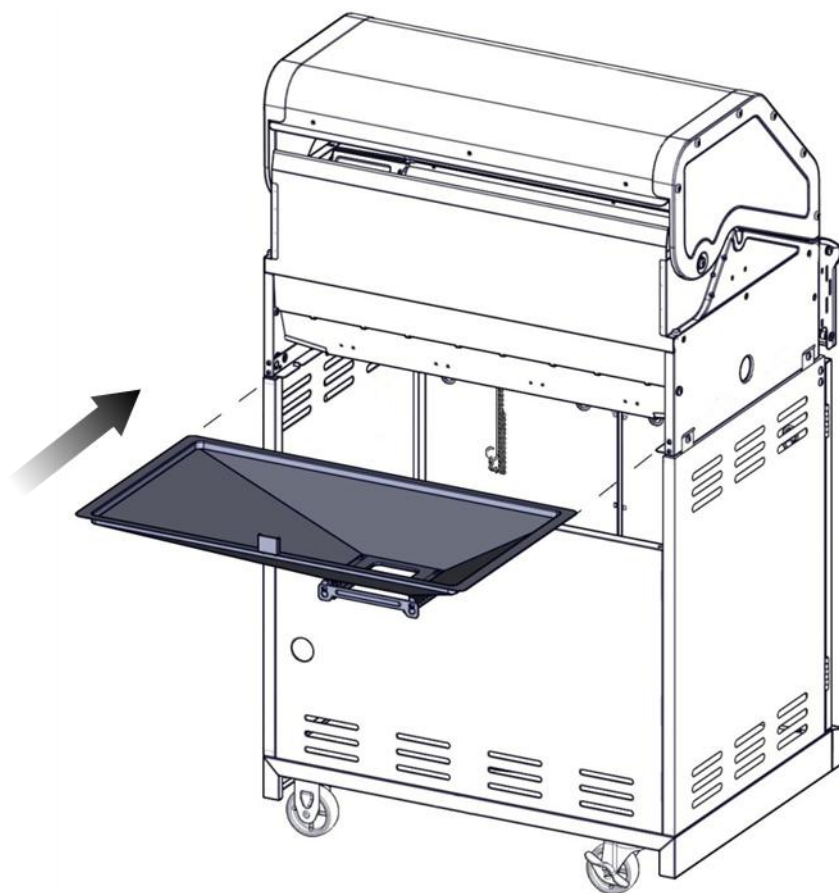


x4

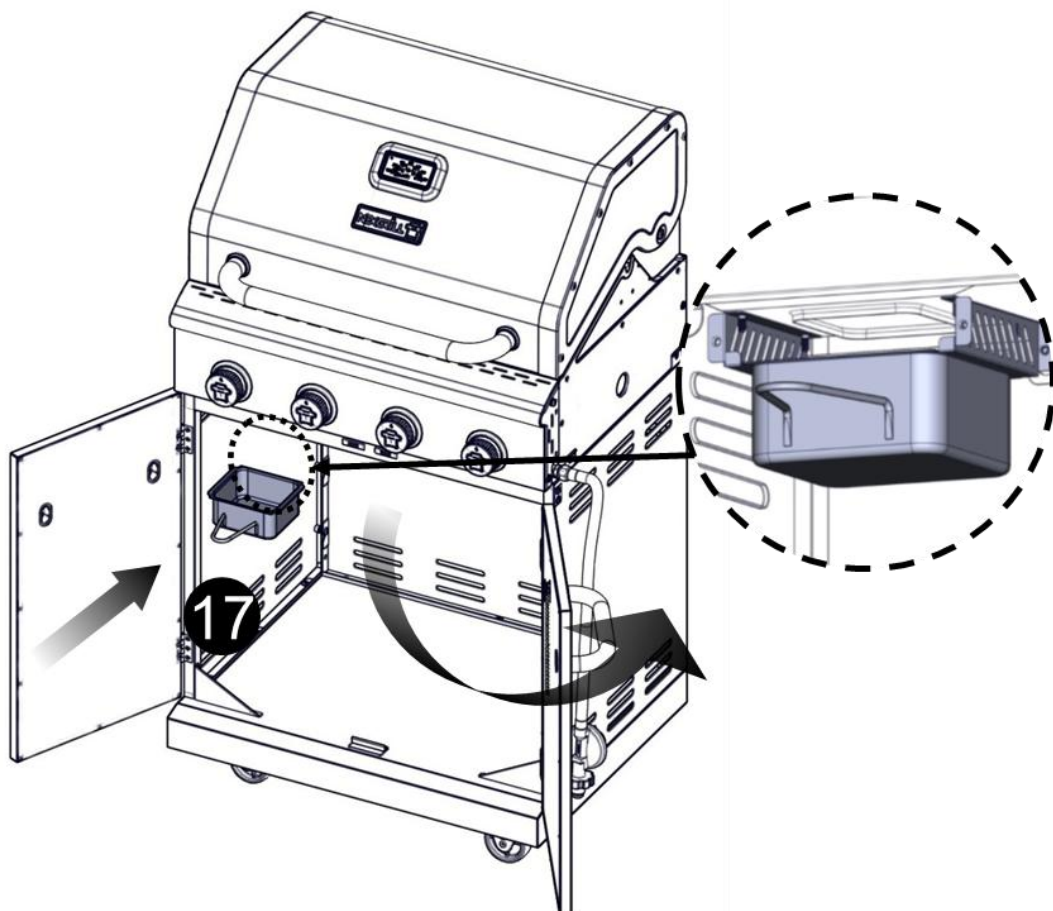




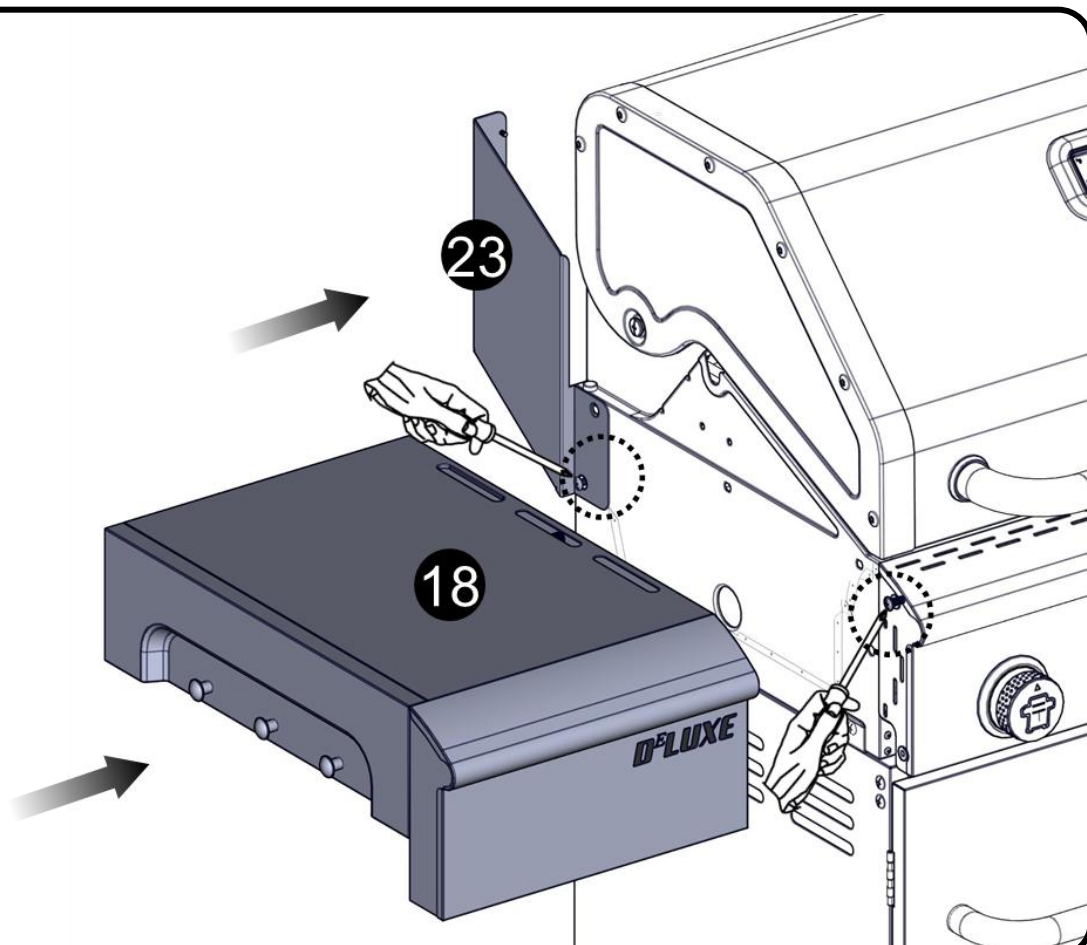
19



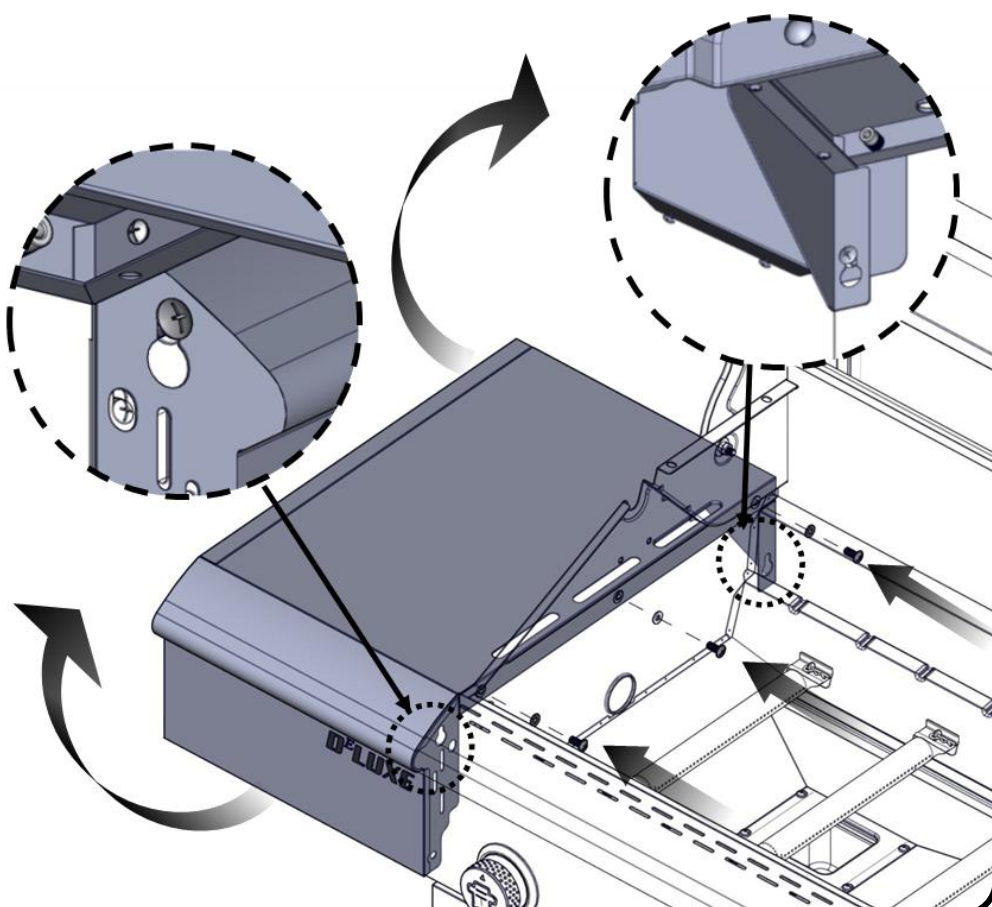
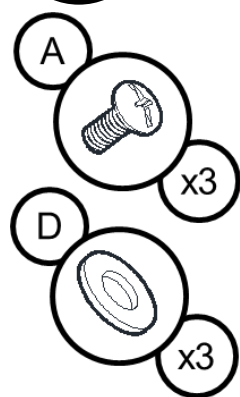
20

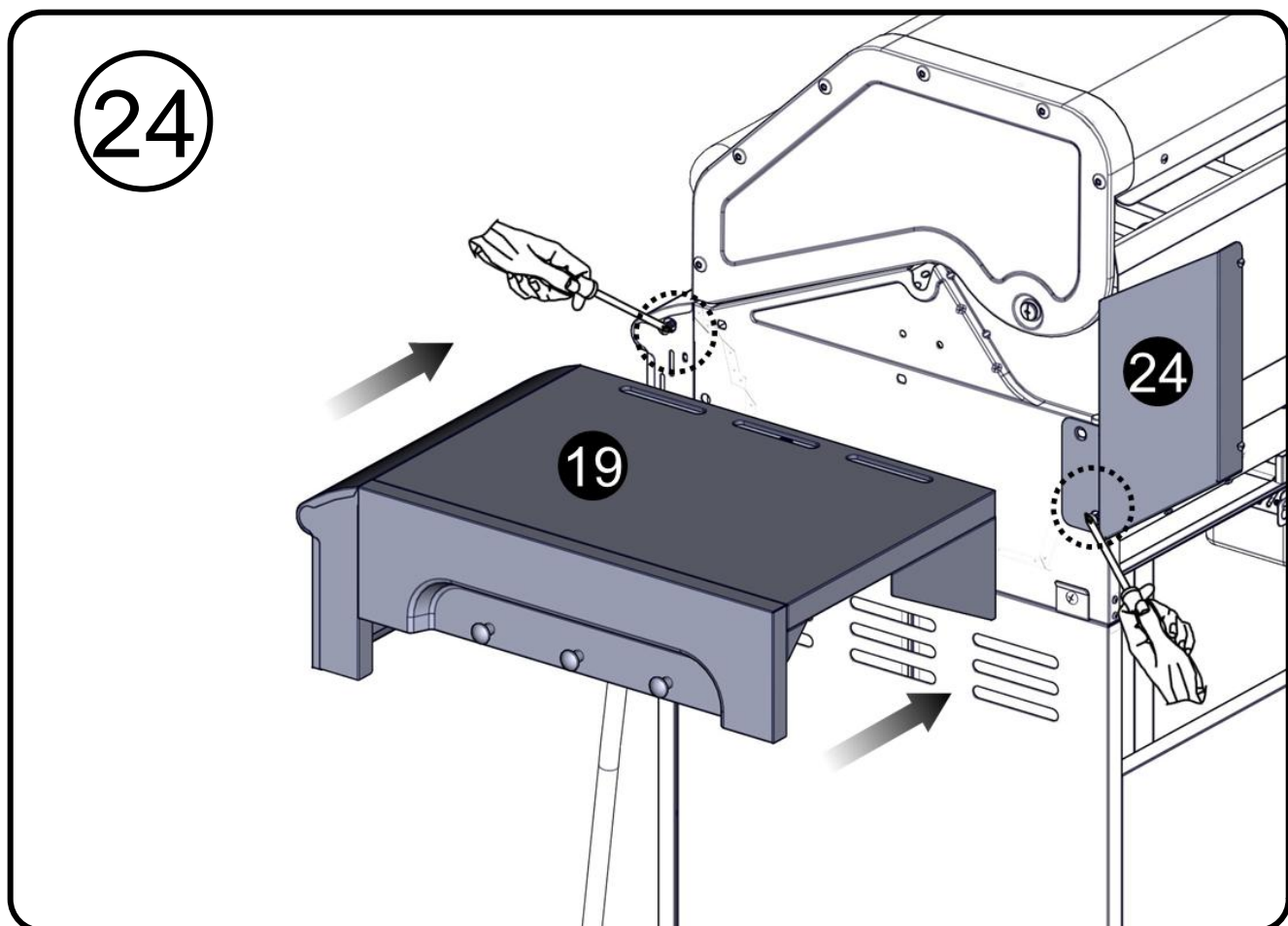
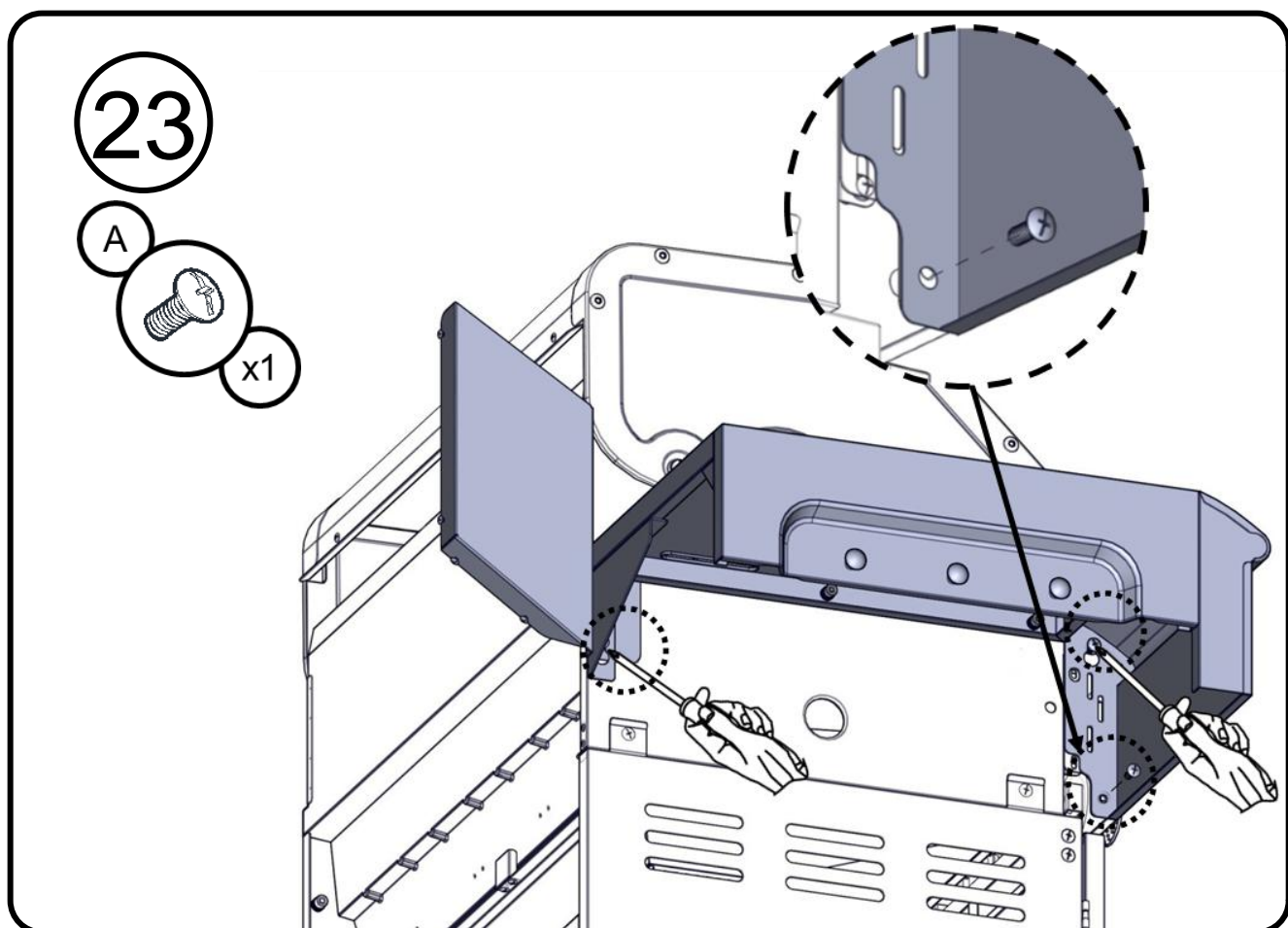


21

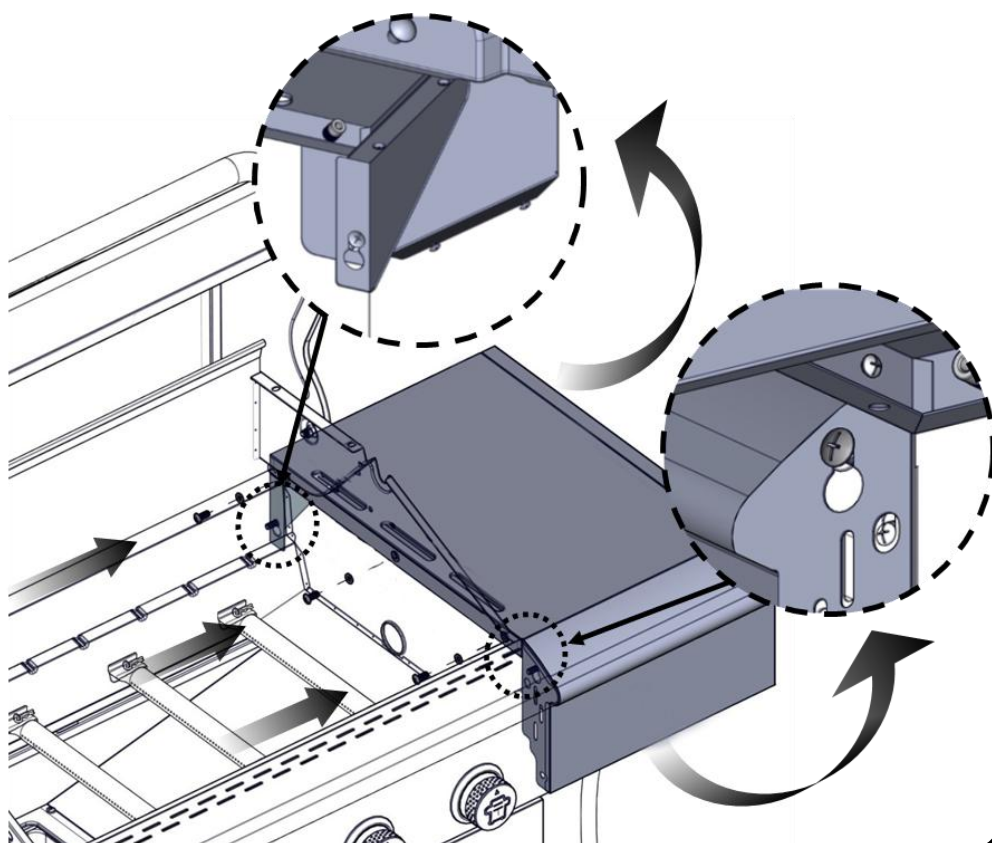
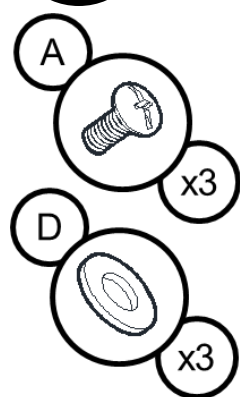


22

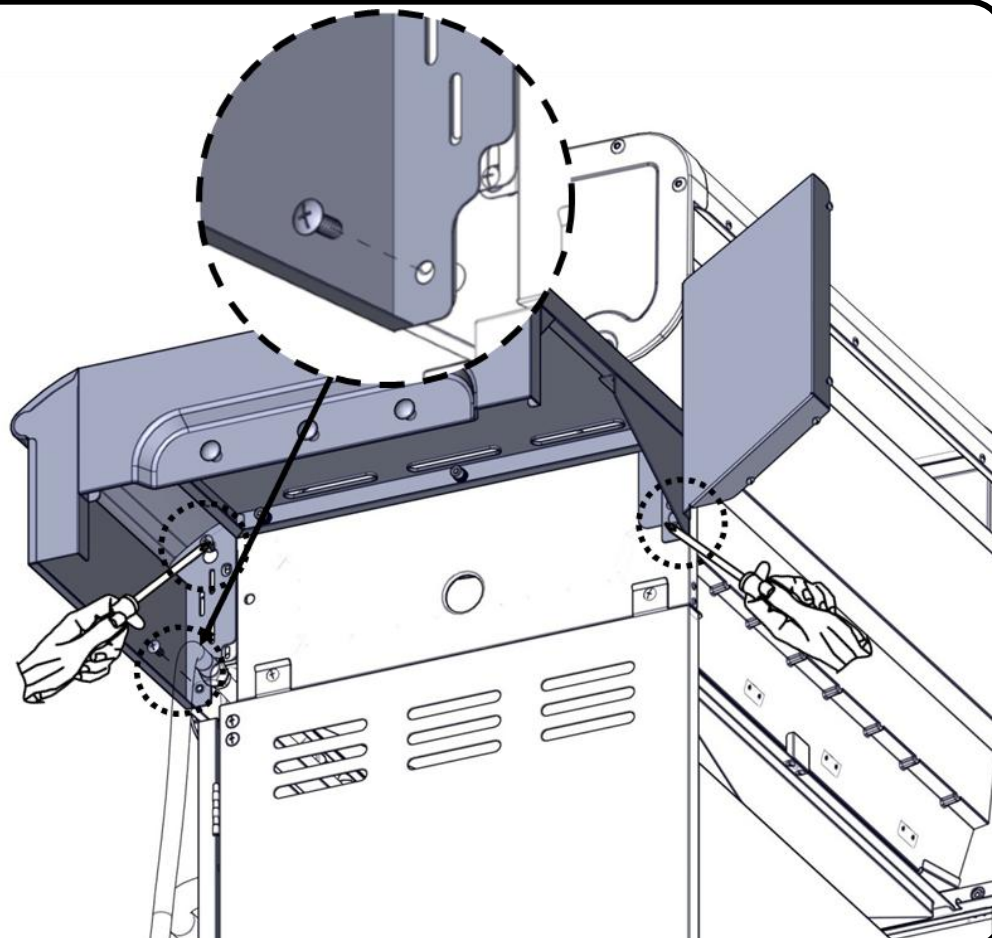
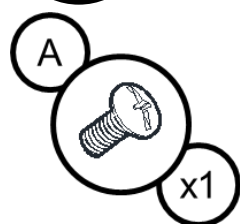




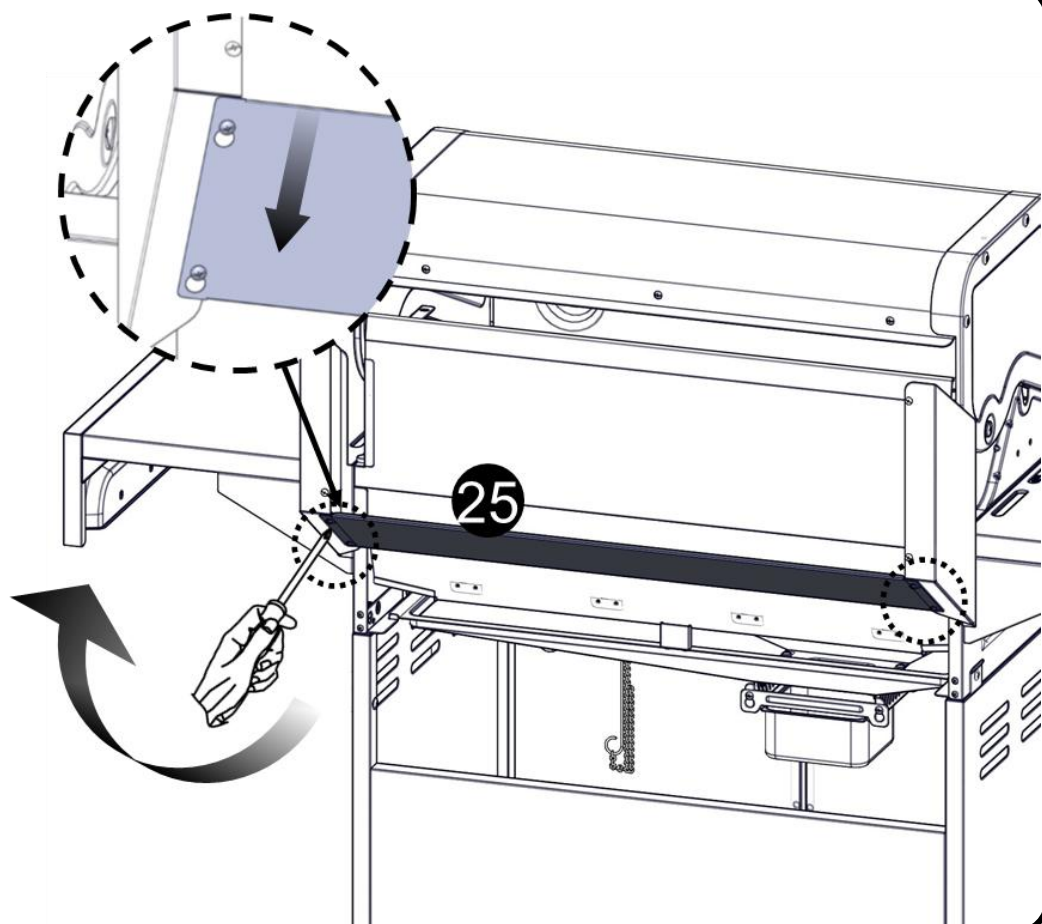
25



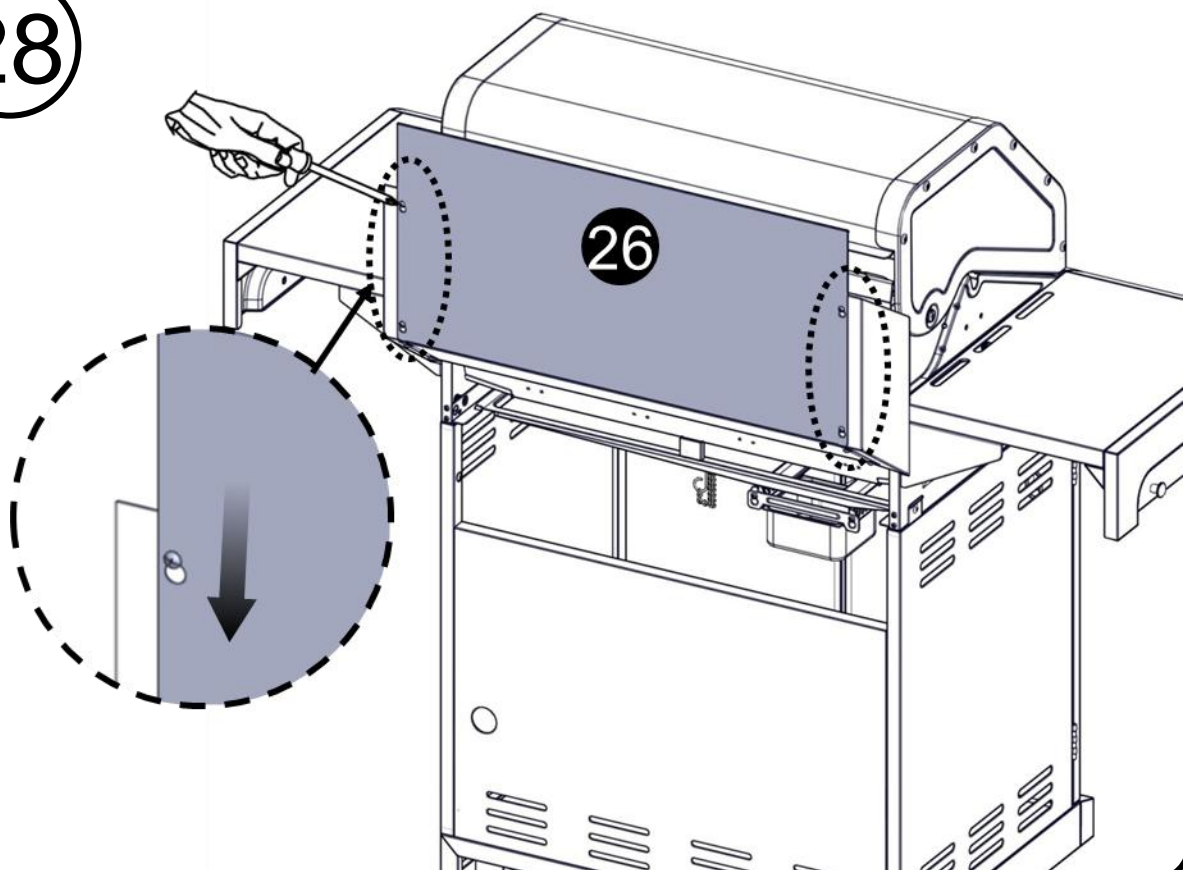
26



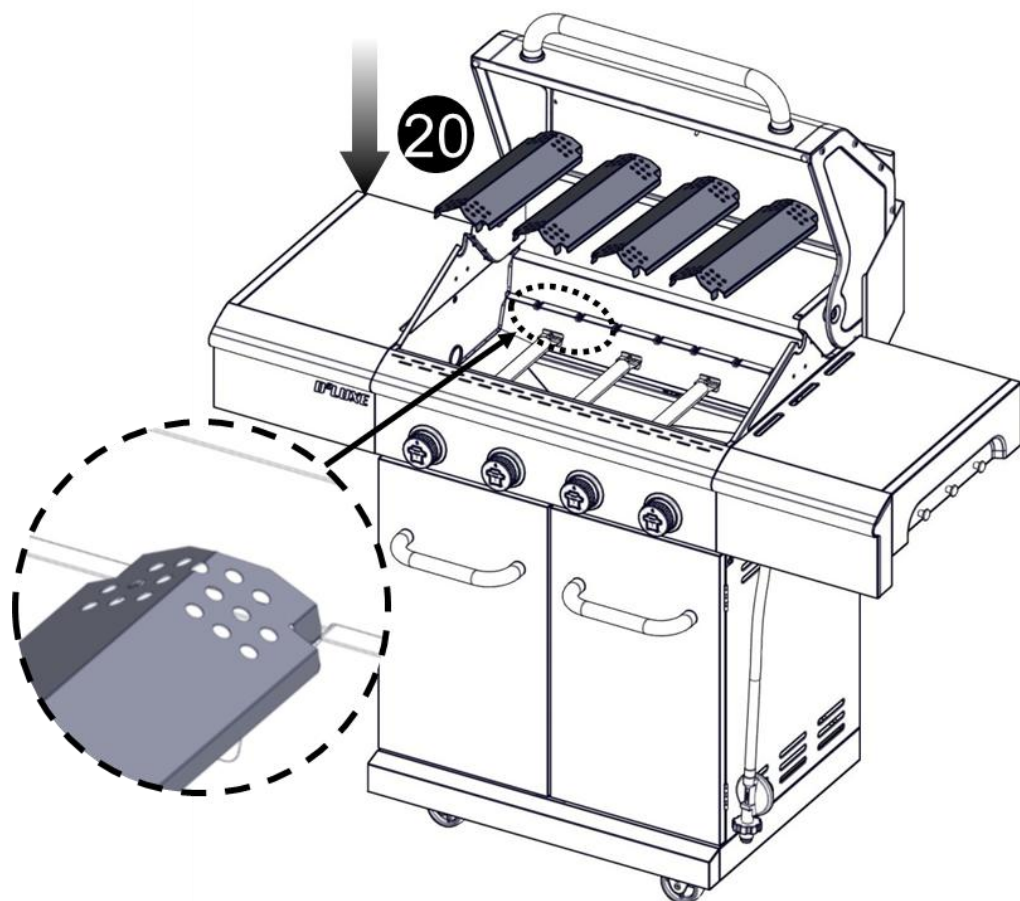
27



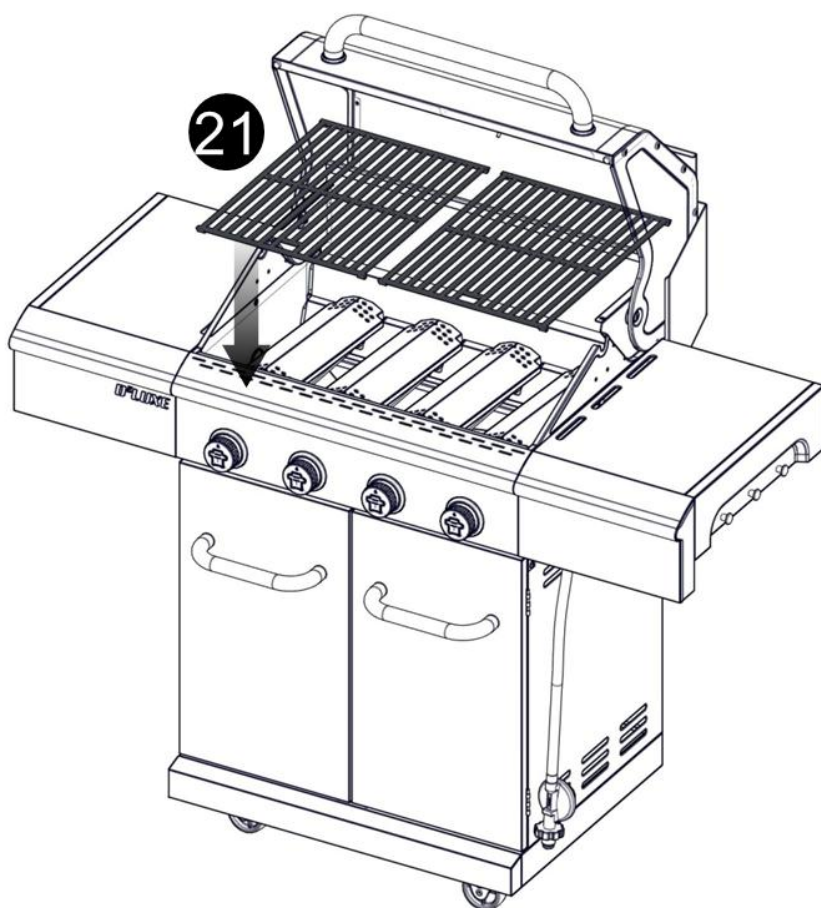
28



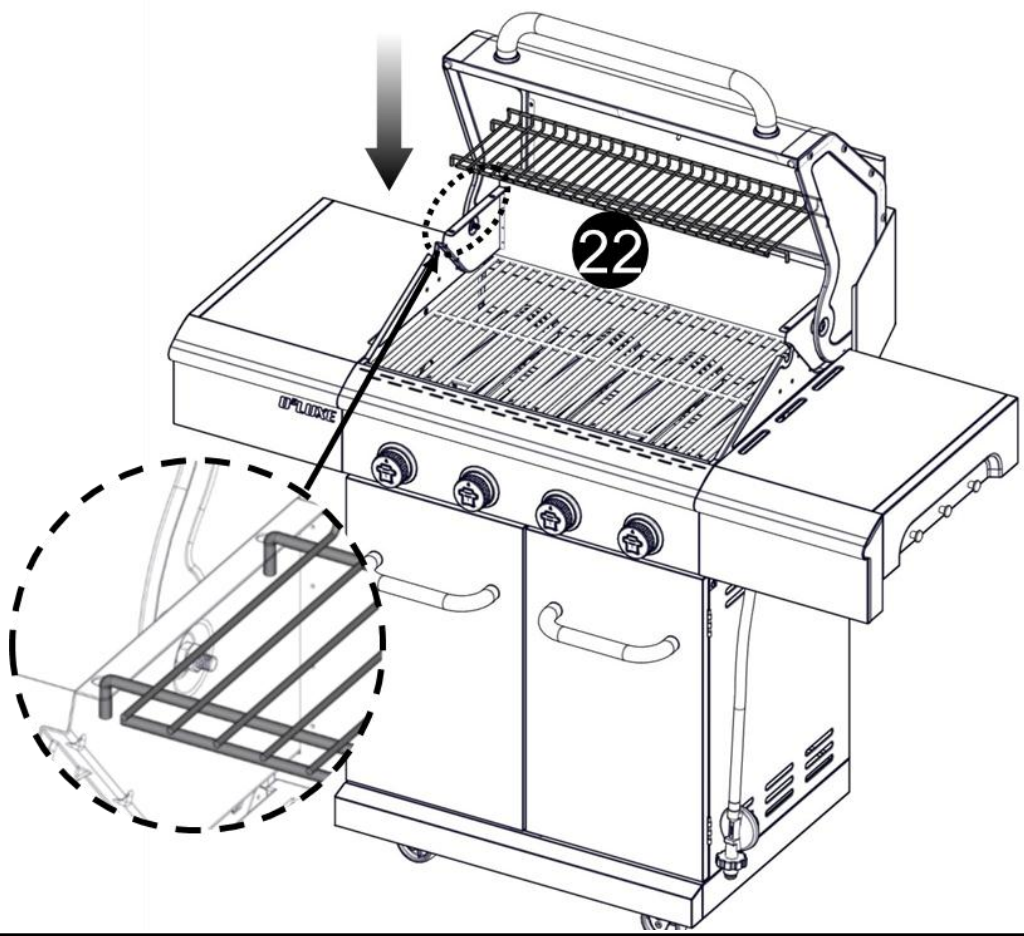
29



30



31



32

